

QUOTE

"Plan ahead—it wasn't raining when Noah built the Ark."
—General Features Corp.

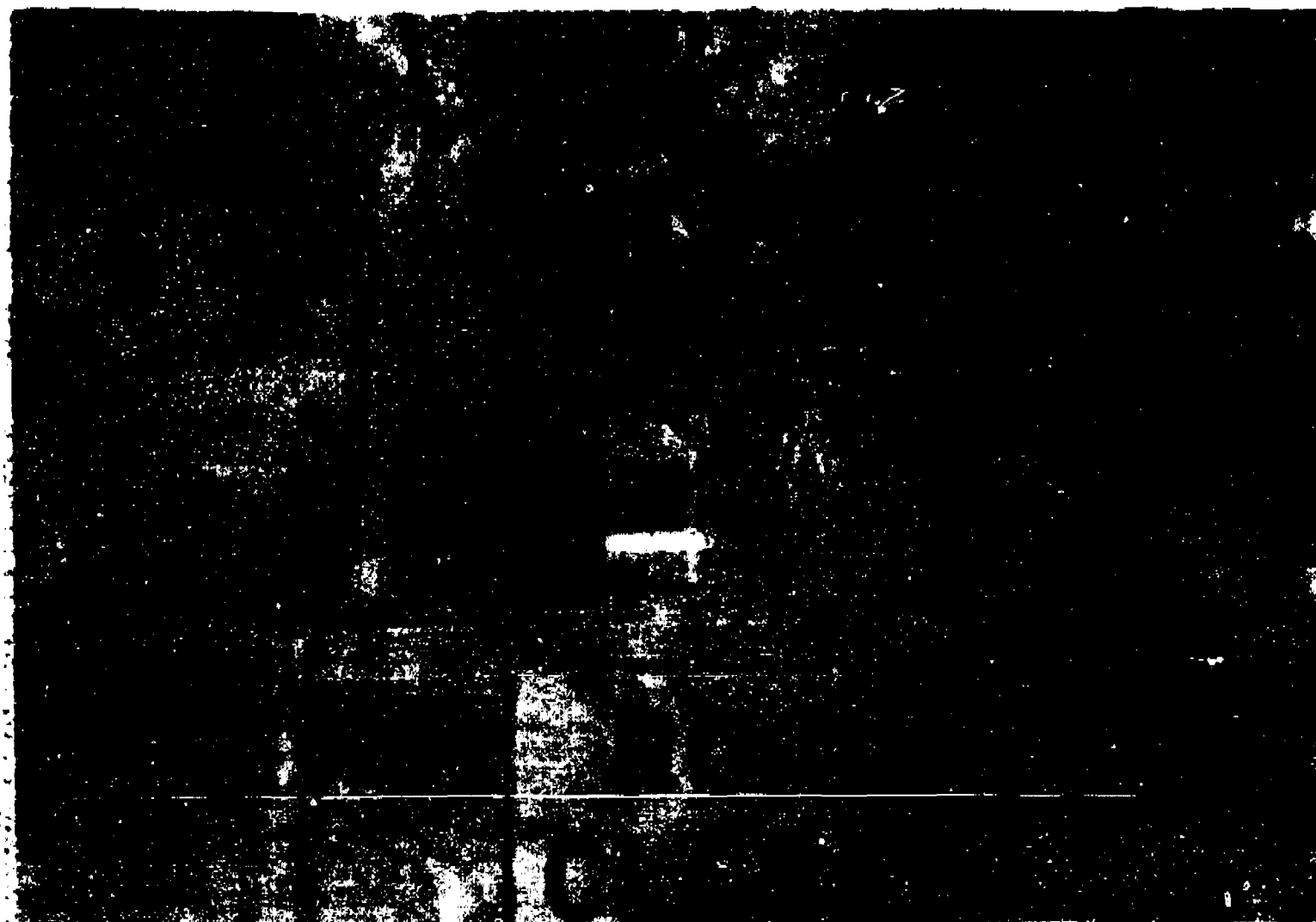
The Chelsea Standard

25¢
per copy

ONE HUNDRED-FIFTEENTH YEAR—No. 47

CHELSEA, MICHIGAN, WEDNESDAY, APRIL 23, 1986

20 Pages This Week



WORKERS ARE ATTEMPTING TO REPAIR A COLLAPSED PIPE ON W. MIDDLE ST. THE PIPE COLLAPSED IN THE AREA OF THE NEW STORM SEWER. THE ROAD, FROM CHASE ST. TO THE FIRE STATION, IS CLOSED TO THROUGH TRAFFIC UNTIL JULY. THE ROAD HAS COLLAPSED IN SEVERAL PLACES AND IS CURRENTLY BEING REPAIRED BY THE VILLAGE ENGINEERS.



DROPPING IN THE PIPE for the new storm sewer on W. Middle St. is heavy work and takes careful positioning. Village workers began construction last Friday of 200 feet of storm sewer, a job that is expected to take more than two months and more than 600 manhours of village labor.

Health-O-Rama Slated Saturday at Hospital

Chelsea Community Hospital will once again be a site for Project Health-O-Rama, to be held at the Hospital on Saturday, April 26, from 9 a.m. to 2 p.m. Free health screenings are available to anyone 18 years and older. No advanced registration is required.

Project Health-O-Rama is a seven-county wide program of free health tests and health information sponsored in Southeastern Michigan by United Health Organizations, WXYZ-TV Channel 7, and Blue Cross Blue Shield of Michigan.

Participants in Health-O-Rama receive free health screenings including hearing, blood pressure, height/weight, glaucoma screening, vision, pulmonary function testing, and women's health education.

A blood panel chemistry is available for a charge of \$8 along with a colo-rectal screening for \$2. Individuals interested in the blood panel chemistry should fast four hours before the blood test.

Also available at Health-O-Rama are medication counseling, nutrition counseling and health screening summary with a health professional. Educational video tapes will be set up offering additional health information.

Many health volunteers will be on hand to assist with the Chelsea Community Hospital Health-O-Rama including Sally Stormen, DDS, Chelsea; Ronald Blodron, DDS, Chelsea; Richard Ernst, DDS, Chelsea; John VanderKolk,

DDS, Dexter; Steven Yarows, M.D., Martin Gleason, M.D., and the Chelsea Family Practice

residents will be available to provide counseling and answer (Continued on page two)

Architects Chosen To Direct Courthouse Reconstruction

At an executive meeting of the Historic Chelsea District Courthouse (H.C.D.C.), representatives of Washtenaw county and the Chelsea community discussed plans for the restoration and expansion of the 85-year-old court building.

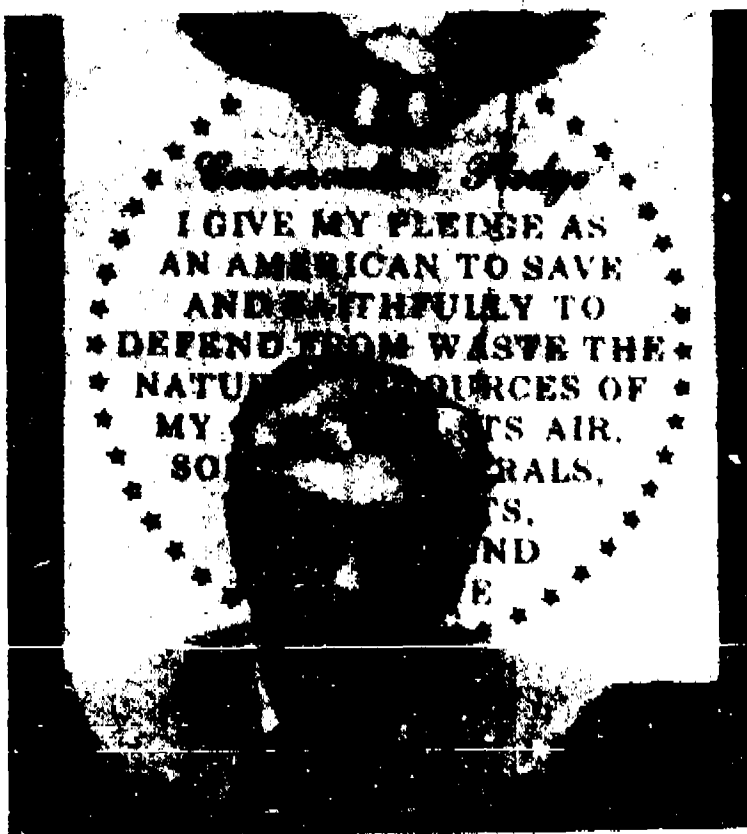
Tom A. Freeman, director of the Washtenaw County facilities management department, described the search for a firm of architects to supervise the Chelsea Courthouse project. Twenty firms were considered and proposals from three finalists were presented at the meeting. The Ann Arbor firm of Poley & Mitchell was chosen to direct the reconstruction project.

County representatives at the March 14 meeting were Commissioner Ellis Pratt, Marcia Seeger, an assistant to the county administrator, Elmore I. Fowle, county architect, and Freeman.

Chelsea was represented by Jerry J. Satterthwaite, president of the Village Council, Fritz Weber, village administrator, Lee M. Fahrner, assistant village administrator, Diana Newman, (Continued on page four)

Hamilton Named to Planning Comm.

Dr. Harriet Hamilton, 234 Park St., has been appointed to the village planning commission to fill out a term previously held by Sheila Stewart. Stewart recently resigned her position after seven years of service. Hamilton's term will expire in June, 1988.



DAVE RANK, newly elected secretary of the Chelsea Rod and Gun Club is seated before the Conservation Pledge which is permanently displayed on the west wall of the clubhouse.

Taco Bell Owners Granted Variance for Logo Sign on Building

In what some village officials see as the death of the current village ordinance regulating signs for businesses, the Chelsea Village Council voted 3-2 last week to grant a variance to Taco Bell for the placement of a logo on the north side of the new restaurant on M-42.

The variance was granted after a long, and sometimes heated, discussion about the topic at the regular April 15 council meeting.

Voting for the variance were trustees Richard Steele, Joe Marini and Gary Bentley. Phil Bohan and Stephanie Kanton voted no. Herman Radloff was not present.

The variance allows primary owner Bill Davis and Ron Martin of Ann Arbor to place a 17-square-foot logo on the north side of the restaurant. Originally they wanted to put signs on both the north and south sides.

By Chelsea law businesses are allowed a total of 30 square feet of signage on their property in that particular part of town. The pole sign in front of the restaurant used up their allowed footage.

The northside logo, Davis and Martin said, is an integral part of the structure of the building in that it also houses lights to illuminate the handicap entrance ramp on the north side of the building.

"If you grant this variance you're going to have to expect a variance from every (other business out here)," said Planning Commission Chairman Frederick Baker, who was on hand at the meeting to answer questions about the planning commission's part in the site approval for Martin and Davis.

The dispute appeared to have been resolved on the part of Martin and Davis.

By their own admission, they thought all the signs had been approved when the planning commission approved their final site plan. They said that both site plans and photographs were submitted to the commission showing how the building would look.

However, as both village president Jerry Satterthwaite and village administrator Fritz Weber pointed out, the planning commission does not have the authority to approve the additional signs on the building. The commission, they said, is concerned with land use only. As such, the only sign they approved was the free-standing pole sign in the front of the building since that was the only sign shown on the site plan.

A site plan can be filed to a complaint of the planned use for the property.

(Continued on page three)

Schools Will Ask for 2.9 Mills in Operating Funds for Next 3 Years

Chelsea school district officials are asking for an additional 2.9 mills in operating millage for the next three years to cover the cost of increased salaries and other expenses.

The district also has a three-year contract of the 2.9 mills in operating millage that was currently approved by district voters in 1983.

"The unfortunate thing is that the district will be asking for a significant increase and it will still be operating under less than desirable conditions," said assistant superintendent Fred Mills.

"Our philosophy has always been not to cut programs entirely and to spread the burden around. We won't have much for capital outlay or additional teaching sup-

plies. We were going to buy four buses, but that was cut back to two."

Inflation, including an anticipated 10 percent increase in salaries, is the major reason for the request, Mills said. At best, an appreciation in the value of land, which the district has been asking for in the past, would offset some of the cost.

If both the old millage and the renewal are approved in the June 3 school elections, estimated revenues and expenses would be approximately \$3,100,000, Mills said. If both were defeated, revenues would drop to approximately \$2.9 million.

The only possible good news concerning the budget recently has been that some within the district may not drop in value as much as first anticipated, Mills

said. He said his recent conversations with the township have indicated that there may be a drop in value. Originally officials had expected a 10 percent increase.

However, even if land values do increase, Mills said, it would not make much of a dent in the budget deficit, only about \$20,000, Mills said.

For a family living in a \$80,000 home, the increase in taxes would be \$8 a year for the next three years, assuming the additional 2.9 mills is approved. Many people will be able to claim a portion of that off their income taxes.

The school district also anticipates saving about \$20,000 in gasoline costs next year due to the recent drop in prices.

(Continued on page four)



MUTUAL PLEASURE is reflected in this photo of John Mitchell, left, president of the Civic Foundation of Chelsea as he hands a donation check for \$3,000 to Bob Merkel, treasurer of the Downtown

Development Authority. The Foundation gift will serve as seed money for many DDA projects to come.

Civic Foundation Gift To Fund DDA Plans

The Downtown Development Authority has been awarded a grant of \$3,000 to generate working plans for the beautification and pedestrian lighting of the Chelsea business district. The award was made by the trustees of the Civic Foundation of Chelsea following review and approval of preliminary plans by the CFC distribution committee.

"The \$3,000 fund is being invested in conceptual drawings by architects and professional planners," Mark Heydlauff, DDA chairman announced. "Significant attention," he added, "centers around the expansion of the downtown area as it moves north beyond the railroad tracks. Special consideration along the way will be given to landscaping

in the area of our restored rail depot."

Although the DDA is a state authorized authority, eligible for funding from tax revenues or millage levies, the seed money granted by the Civic Foundation represents a most welcome beginning from community sources.

Speaking on behalf of the Civic (Continued on page two)

The Chelsea Standard

Established 1871 Walter P. and Helen May Leonard, Publishers 313-475-1371
USPS No. 101-20



Published every Wednesday at 200 N. Main St., Chelsea, Mich. 48118 and second class postage paid at Chelsea, Mich. 48118 under the Act of March 3, 1879. Postmaster: Send address changes to The Chelsea Standard, 200 N. Main St., Chelsea, Mich. 48118.

Subscription Rates (Payable in Advance)

In Michigan	Outside Michigan
One year in advance \$12.00	One year in advance \$12.50
Six months \$6.50	Six months \$7.00
Single copies mailed \$.25	Single copies mailed \$.25

DEADLINES

News Notices	Monday Noon
Display Advertising	Thursday 5 p.m.
Classified Advertising	Saturday Noon
Life Classified Ads	Monday Noon

OFFICE HOURS

Monday-Friday	8:30-5:30 p.m.
Saturday	9:00-12 Noon

MEMBER
NATIONAL NEWSPAPER
Association Founded 1865

National Advertising Representative
MICHIGAN NEWSPAPERS, INC.
637 N. Washington Ave.
Lansing, Mich. 48206

JUST REMINISCING

Items taken from the files of The Chelsea Standard

4 Years Ago . . .

Tuesday, April 29, 1982—

More than 125 runners from Chelsea, Dexter, Manchester, Ann Arbor and metropolitan Detroit took part Saturday in Chelsea Jaycees' second Scenic 6 and 2 Mile Run.

Four persons submitted petitions for two Board of Education vacancies—incumbents Dale Schumann and Daniel Snyder, and newcomers Raymond Coster and James Patterson.

Chelsea Fire Department and Chelsea Chamber of Commerce will put Project ARPS (Address Readable From Street) into effect May 1. Suggested to fire chief Bob Hanker by a college student, the project is aimed at putting six-inch reflecting numbers on houses located within the Chelsea Fire District to assist emergency vehicles.

Senior outfielders Mike Gipson and Craig Olmsted are this week's featured baseball players. Gipson plays right field and has an outstanding arm, according to coach Wayne Welton. Olmsted plays left and centerfield and is the team's lead-off batter.

Track stars featured this week are three senior level winners. Toby Boyd, Darin Pierson and Bob Spaulding. In the upcoming meet against Jackson Lugsen Christ the trio assisted in leading Chelsea to an 88-44 victory.

14 Years Ago . . .

Thursday, April 29, 1972—

David P. Kiemer, CHS sophomore, was the second place winner in the senior division of the 14th annual Southeastern Michigan Science Fair held in Ann Arbor April 15. David's project was entitled "Laser Holography," for which he received \$100, an all expense-paid trip to

the International Science Fair in New Orleans, La., and a silver medal. David and his family moved to Chelsea nine months ago from Elizabethtown, a small town just outside Philadelphia.

Senior Randy Setz, a consistent stand-out in the shot put, took another first with a toss of 48' 9 1/4" while Laurence Picklesimer finished third in a 74-49 CHS track victory over Milan this week.

Roger Fitch and Bill Tite finished first and second in the high jump with leaps of 5' 10" and 5' 8 1/2" and Craig Coize took second in the long jump with 18' 3 1/2". The Chelsea mile relay team of Dan Hoover, Jeff Van Riper, Jeff Marshall, and Dave Buxton won in a time of 3:45.8.

Harold Salyer and Ott Rusner will be in Atlantic City, N. J. next week to attend a UAW convention as representatives of Local 637.

24 Years Ago . . .

Thursday, April 29, 1958—

1958 4-23 Spring Achievement dress revue winners from Chelsea clubs were Cynthia Niehaus in the Young Miss division; Anita West, Junior Miss; and Grace Kinsman and Judy Bateman in the Senior Miss division.

"College" John Glenn's recent orbit around the earth was the subject for a "Space Project" for Mrs. Paul Fieles' second graders at South Elementary school. Pupils read many books on the subject and wrote stories about Colonel Glenn's successful flight. Brad Curtis, with his father and classmates assisting, assembled a replica of the capsule named "Friendship 7" in the classroom.

Girl Scouts of Troop 48 made Easter egg trees for table decorations at the Methodist Home. Four Girl Scouts shown in a Chelsea Standard photo were Cynthia Heppburn, Penny Eisenbeiser, Nancy Mshar, Sandy Severn and Sherry Clark.

Last Saturday proved to be a joyous day for local folks as the Eighth Grade Band came out of the State Festival competition with a unanimous First Division rating from the judges.

(Continued on page four)

Environmental Groups Call for Federal Action on Superfund

Congressional inaction on new financing for the federal Superfund program to clean up toxic waste sites threatens Michigan's ability to clean up hazardous waste sites, representatives of a variety of environmental organizations declared recently.

Officials from PIRGIM, the Michigan Environmental Council, the Sierra Club and the Audubon Society called on the three Michigan congressional members serving on the Superfund conference committee to push for quick action of the Superfund bill and back changes to improve government ability to order toxic cleanups.

They all called for approval of \$10 billion in financing, which the federal House approved instead of the \$7.5 billion the Senate approved or the \$6.3 billion President Reagan proposed.

They asked the Superfund be used to clean up 150 sites a year, compared to the two sites a year the Superfund has cleaned up since 1980, for provisions giving citizens the right to know about storage of toxic chemicals in local areas, and to sue polluters for cleanup of imminent hazards.

Michigan is second only to New Jersey in the number of toxic waste sites on the federal Superfund priority list, Don Rounds of PIRGIM said. "The cleanup of these poisons is too critical a public health issue to be paralyzed by special interest politics in Washington," he said.

Congress has failed since September to reauthorize general financing for the Superfund, and has failed to agree on its new statutory provisions. Congress has approved \$120 million for a 90-day stopgap funding extension, but Michigan has received

only \$2 million, and planning and programs on some 21 toxic waste sites in the state have been delayed, Carol Danvers of the MEC said. The state has also had to spend its own money at three sites where federal funding has been withdrawn and may have to step in to spend money at another seven sites where the same action is possible, she said.

Democrat John Dingell of Dearborn, Guy VanderJagt of Luther and Robert Davis of Gaylord are members of the House/Senate conference committee working on the new Superfund legislation.

Williams Asks \$30 Million for State Financing of Courts

Michigan's judicial system has lagged behind the Executive Office and the Legislature in modernizing its operations and needs \$30 million more in 1986-87 to perform its constitutional functions, Chief Justice G. Meenan Williams told a joint meeting of the House and Senate in his State of the Judiciary address.

The Supreme Court has undertaken a four-point program to help update and improve its overall operations, but accomplishing the constitutionally-required one court of justice will need state appropriations, Williams said.

He called on the Legislature to appropriate \$30 million as a "modest beginning" to assume a state share of local court services.

The Legislature, the Executive Office and the public have recognized the need for improvements in court operations, Williams said, but "the expressed intentions and first steps have not been completely implemented."

The recession of the early 1980's delayed the planned take-over by the state of local court

operations, begun in 1980 with Wayne county courts, but the need for state assumption remains, he said.

"Funding units previously disinterested in state assistance for trial courts are now faced with adverse financial circumstances and many are most interested in our 1986 program of state funding," Williams said.

Governor Blanchard has not recommended expanding state assumption, but is urging state payment of a greater share of local judges' salaries.

The \$30 million Williams requested represents a change from previous funding formulas. In the past the Supreme Court has asked for a percentage of total court funding, which the Legislature has rebuffed.

This year, Williams said the Court is asking that legislators finance the cost of essential services trial courts are required constitutionally to provide, such as assigned counsel, juror fees, witness fees, transcripts and court reporting.

The other steps to improve court operations, he said, involve reducing delays on trials and decisions through new time standards, improving the public understanding of the courts and determining how courts can improve services to families and children.

Health-O-Rama

(Continued from page one)

questions. Dr. Barry Neenan is the medical advisor for Health-O-Rama.

Due to the success of Health-O-Rama, individuals should be prepared to wait 30 to 40 minutes for health screenings.

For further information call Chelsea Community Hospital at 475-1311, ext. 491.

Civic Foundation

(Continued from page one)

Foundation, President John Mitchell said. "The grant to the DDA ideally fulfills the goal of our foundation. We are organized especially to provide funds which are needed to begin new projects or reinforce existing efforts to promote the well-being of the community."

Submit your club news and personal items in writing—and don't forget your phone!

CATHOLIC SHOPPE

The Largest Selection of Books of Devotion

MINUTE COMMUNION & CONFIRMATION GIFTS

M-F 10:30-5:30 Sat 10:30-4

104 N. Main St.

Downtown Jackson

corner of Michigan & Main

in the lower level

(517) 783-3145



CONTRACT EXTENDED: Chelsea Police Chief Leonard McDougall had his contract extended for one year in action by the village council last week. "If you promise not to cut my salary, I won't ask for a raise," McDougall told the council. McDougall makes \$30,000 annually.

IT'S TIGER TIME!!

Get your group together for a ballgame. Call us to arrange for tickets and bus transportation.

475-8630 Call us Now 475-8639

Always Lowest Available Air Fares

AMERICAN AIRLINES - CONTINENTAL - AIRFRANCE

Corporate Accounts Welcome



Affiliated with Maple Valley Travel

There is No Charge for Our Service!

FREE TICKET DELIVERY

104 S. MAIN ST., CHELSEA, MICH. 48118

(Above Secretary of State office)

WEATHER

For the Record . . .

	Max.	Min.	Precip.
Wednesday, April 16	62	37	0.13
Thursday, April 17	62	37	0.80
Friday, April 18	62	35	0.80
Saturday, April 19	58	34	0.84
Sunday, April 20	55	43	0.47
Monday, April 21	44	30	0.19
Tuesday, April 22	41	24	0.84

IBM...CBS...NSM

the one you know the least could someday help you the most.

NSM, National Selected Morticians, is a voluntary, independent organization which recognizes the time is now to take seriously about some of the toughest and best kept secrets in life—the death and funeral business.

The time is now to take seriously to many people and they have shed away the secrets of the death and funeral business to help you experience the funeral business in a new way. The time is now to take seriously to many people and they have shed away the secrets of the death and funeral business to help you experience the funeral business in a new way.

Your local NSM member feels that it is in your best interest to become informed now. That is why he has helped to prepare an impartial booklet, "A Helpful Guide to Funeral Planning." Learn about services, about the options and services available to you. How you can avoid unnecessary mistakes.

Your National Selected Mortician wants you to get the facts now so you will be prepared to handle your responsibilities when they occur later.

Send for your free copy of "A Helpful Guide to Funeral Planning" by mailing the attached coupon today.



Staffan-Mitchell

FUNERAL HOME

124 PARK ST., CHELSEA PH. 475-1444

Please send me a free copy of "A Helpful Guide to Funeral Planning."

Name _____

Address _____

City _____

State _____ Zip _____

ELECTROLUX
INTRODUCES THE
DISCOVERY
The Unequaled Upright
Vacuum Cleaner
SPECIAL INTRODUCTORY PRICE \$299*
*Available For Limited Time Only
FOR A DEMONSTRATION CALL:
GLEN MAST DEXTER
426-3882

PALMER **FORD** **MERCURY** **APRIL ONLY**

74th ANNIVERSARY

WASHTENAW'S NEWEST MERCURY DEALER

OVER 100 VEHICLES TO CHOOSE FROM

SELLABRATION SALE

TEMPO SELECT GL
LOADED WITH EVERYTHING YOU WANT IN A CAR
AND ONLY PALMER CAN PUT YOU IN THE DRIVER'S SEAT

- LUXURY SOUND PACKAGE
- VISOR VANITY MIRRORS
- DIGITAL CLOCK
- INTERVAL WIPERS
- AM-FM 4 SPEAKER STEREO/CASSETTE
- PREMIUM SOUND SYSTEM
- AUTOMATIC TRANSMISSION
- WHITEWALL TIRES
- BODYSIDE MOLDINGS
- BUMPER RUB STRIPS
- WARNING CHIMES
- TINTED GLASS
- FRONT CENTER ARM REST
- SPEED CONTROL
- TILT STEERING WHEEL
- REAR WINDOW DEFROSTER
- AIR CONDITIONING
- TRANSPORTATION & PREP

\$9774⁰⁰
VALUE \$10,593

7.9%* Annual Percentage Rate

PALMER **FORD** **MERCURY**

Michigan's Oldest Ford Dealer

Open Mon.-Thurs. 'til 9, Sat. 'til 1 p.m. • SERVICE OPEN SATURDAY, TOO.
CHELSEA Just minutes away. I-94 to M-32 North 1 1/2 miles downtown **475-1301**

Botanical Gardens Feature Ikebana Spring Displays

The lobby exhibit for April at Matthaei Botanical Gardens is Spring with Ikebana. Ikebana International of Ann Arbor will once again bring their lovely arrangements to the Gardens' lobby. Each Friday a new selection of arrangements will be presented by various members of the Ikebana International. This exhibit is open to the public and is free.

The grounds at the Matthaei Botanical Gardens are open from 8 a.m. to sunset at no charge. The Conservatory is open from 10 a.m. to 4:30 p.m. There is a fee of \$5; Senior Citizens 75¢; and children 50¢. The Gift Shop that has "something for everyone" is open from 11 a.m. to 3 p.m. through Friday and 10 a.m. to 3 p.m. on Saturday and Sunday. Come to the Gardens and walk the nature trails, tour the Conservatory, and browse in the Gift Shop.

Decades who have had extensive training are at the Gardens for guided tours during the week. Please call the Gardens (313) 763-7000 for reservations.

The Matthaei Botanical Gardens are located at 1800 Dixboro Rd., Ann Arbor.



NICHOLAS-WALWORTH: Barbara Nicholas of Ypsilanti and Leonard Nicholas of Orlando, Fla., have announced the engagement of their daughter, Rebecca Jay, to Kurt Linn Walworth, son of Sharon Walworth of Chelsea and Bruce Walworth of Saline. A Jan. 24, 1987 wedding is planned. The future bride is employed at Brookside Veterinary Hospital. The future bridegroom is employed at Saline Construction Co. The couple plans to live in Ann Arbor.

Free Breastfeeding Program Offered

"It's Never Too Early To Think About Breastfeeding," a free program for prospective mothers and their families, will be offered at 7:30 p.m. Wednesday, April 29 to the St. Joseph Mercy Hospital Education Center Auditorium.

The program is designed to help pregnant women and women who are thinking about becoming pregnant decide whether breastfeeding is right for them. It will examine the advantages and considerations of breastfeeding and how breastfeeding can fit into their lifestyle. Mothers, mothers-to-be, and other relatives and friends of the prospective mother are invited.

To pre-register, call Catherine McAuley Health Center's Office of Health Promotion at 372-3675. The \$10 fee per mother-to-be covers the woman's family and friends.

Subscribe to
The Chelsea Standard!

CAROL'S CUTS

40 CHESTNUT

Wednesday
and Friday
475-7094

By Appointment Only
9:00 a.m. - 3:00 p.m.

Volunteer Drivers Needed By Red Cross

The American Red Cross, Washtenaw County Chapter, a United Way agency, is in need of volunteer drivers to transport equipment to homes and make chapter deliveries. Responsible volunteers with valid licenses available three or four hours a day, Tuesday, Thursday, and/or Friday are needed. Own vehicle not needed.

Please call the Volunteer Resources office at 971-6900.

Altar Society Tours U-M Bentley Library

Fourteen members of St. Mary's Altar Society were given a conducted tour of the Bentley Historical Library on the North Campus in Ann Arbor on April 7.

After the tour they held their business meeting. Plans were made for the Mother-Daughter dinner in May.

Dr. Botsford Places Third in Toledo Radio Control Expedition

Dr. James Botsford of Chelsea recently placed third in the 23rd Toledo Radio Control Expedition, a competition for radio control model airplanes.

The competition is one of the largest in the country and draws contestants and observers from all over the U.S. and Canada.

Botsford is a member of the Chelsea-based Wild Goose Flyers, Inc.

Senior Citizens Nutrition Program

Weeks of April 23-April 30

MENU

Wednesday, April 23—Sweet and sour ribs, green beans, potato salad, whole wheat bread, cherry crisp, milk.

Thursday, April 24—Roast beef with gravy, mashed potatoes, buttered carrots, roll and butter, applesauce, milk.

Friday, April 25—Macaroni and cheese, buttered mixed vegetables, pineapple slaw, strawberries in Jell-O, milk.

Monday, April 26—Sloppy joe on bun, hash brown, peach-prune salad, dessert, milk.

Tuesday, April 27—Lemon chicken, mashed sweet potatoes, sliced beets, corn muffin, fruit ice, milk.

Wednesday, April 28—Cream of potato soup, ham and cheese on rye, three-bean salad, strawberries and bananae, milk.

ACTIVITIES

Wednesday, April 23—9:30 a.m.—Cards, break for lunch, play continues until 4 p.m. 9:30 a.m.—Needlepoint, knitting and crocheting.

10:00 a.m.—Ceramics. 10:30 a.m.—Blood pressure. 1:00 p.m.—Fitness. 1:00 p.m.—Bowling.

Thursday, April 24—9:30 a.m.—Cards. 9:30 a.m.—Needlework. 9:30 a.m.—Crafts.

10:00 a.m.—Newsletter. 1:00 p.m.—Needlework. 1:00 p.m.—Kitchen Band. 2:00 p.m.—Walking.

Friday, April 25—Exercise tournament. 9:30 a.m.—Cards. 9:30 a.m.—Needlework. Monday, April 27—Senior Citizens leave for Williamsburg.

9:30 a.m.—Cards. 9:30 a.m.—Needlework. 9:30 a.m.—China painting. 1:00 p.m.—Stained glass. 1:00 p.m.—Bingo.

Tuesday, April 26—9:30 a.m.—Cards. 9:30 a.m.—Needlework. 10:00 a.m.—Crafts. 1:00 p.m.—Exercise.

Wednesday, April 28—9:30 a.m.—Cards. 9:30 a.m.—Needlework. 10:00 a.m.—Ceramics. 1:00 p.m.—Fitness. 1:00 p.m.—Bowling.

Herbs, Perennials Offered for Sale at Botanical Gardens

The annual sale of herbs and perennials by the Friends of the Matthaei Botanical Gardens will be held in the auditorium of the Gardens at 1800 N. Dixboro Rd., Ann Arbor, Saturday and Sunday, April 26-27, from 10 a.m. to 4 p.m. each day. The Friends preview will be held on Friday, April 25 from 7 p.m. to 9 p.m. for members only. New members may join at the preview. This event is one of the Friends' yearly fund-raising events for projects at the Gardens.

The selection and number of perennials has once again been increased and will include many new plants never offered before.

The list includes species and cultivars of Asters, Digitalis, Hosta, Euphorbia, Oenothera, Phlox, Aquilegia, Dianthus, Arabis, Campanula, Heuchera, Penstemon, Delphinium, Veronica, Anemone, Aster, Gypsophila, Poppies, several ornamental grasses, plus many, many more.

A wide selection of herbs will be available at this sale and will include Basil, Oregano, Cilantro, Parsley, Sage, French Tarragon, Marjoram, Rosemary, Mint, Thyme, Lemon Balm, Lemon Verbena, French Savory, Camomile, Lavender, Fennel and many others. In many cases several varieties of cultivars will be available of a particular herb such as Sage, Thyme, Basil, Rosemary, etc.

There will be other plants which will include hardy native ferns, orchids, aquatic bog plants, native lilies, irises, gladioli, begonia, marigolds, and many other native wildflowers.

In addition, at the sale this year will be potted tuberous begonias, both upright and trailing types in all colors. There will be a nice selection of rock garden plants for those interested in rock gardens.

This sale is open to the public. For further information, please call the Gardens, (313) 763-7000.

Please Notify Us
In Advance of
Any Change in Address

ROSES



Roses to wear forever handcrafted in 14Kt. Gold Overlay. From Klementz... Creators of Timeless Beauty.

WINANS JEWELRY

Klementz



GOLDEN ANNIVERSARY: Mr. and Mrs. Willard (Whitney) Guest, formerly of Chelsea, celebrated their 50th wedding anniversary in Rushin, Fla., with their children, Bud and Melissa Guest of San Ramon, Calif., and Patty and Craig Gagliardi of Naperville, Ill. on March 8. Whitney and Viola retired to Florida in August, 1979. They belonged to St. Mary's Catholic church and were involved in church activities and the community. Whitney announced all the high school football and basketball games for many years before he retired. Viola's 10 brothers and their spouses traveled from Ohio, Pennsylvania and Michigan to help them celebrate, along with 200 friends from all over Florida. They live at 2600 Cockroach Bay Rd., Rushin, Fla., 32750.

IT'S NATIONAL VOLUNTEER WEEK

The Housing Bureau for Seniors wishes to say

"Thank You, Treva Winans"
Our Chelsea Volunteer

COME IN AND PICK SOME VALUES AT OUR

BLOOMING SPRING
SALE
OF
OFFICE
PRODUCTS

COPY SERVICE

Chelsea Office Supply

118 S. Main St. Ph. 475-3539 or 475-3542
Mon.-Fri. 9:00-5:30, Sat. 9:00-4



When you buy a new
Armstrong floor, we'll
give you \$2 a sq. yd.
for your old one

Isn't it nice to discover that your tired old floor is so valuable. Bring us your measurements (or we'll send someone to do it for you) and purchase a new floor before May 3 and you'll receive a \$2 a square yard trade in allowance. Come in now and select your favorite from our extensive collection of Solarian Supreme, Designer Solarian, Designer Solarian II, Crowne Corlon or Glazecraft flooring.

Merkel

FLOOR STORES

(Armstrong)

So nice to come home to

Lose
17-25 lbs.
in 6 weeks.



You can do it... without shots, drugs, pills, or special foods... and without feeling hungry. Your own personal counselor will show you how... and stay with you every step of the way. Your first consultation is free. Call now.

SPANNE GALT
Biol Center
of Ann Arbor-West
271 North Maple
Rushin, Michigan 48160
Ph. 975-0277



Watch for Our New SPRING SALE CATALOG in your mailbox!

Stop in and see the most popular gift items in the industry at special prices.

All items shown in catalog are now available in our store.

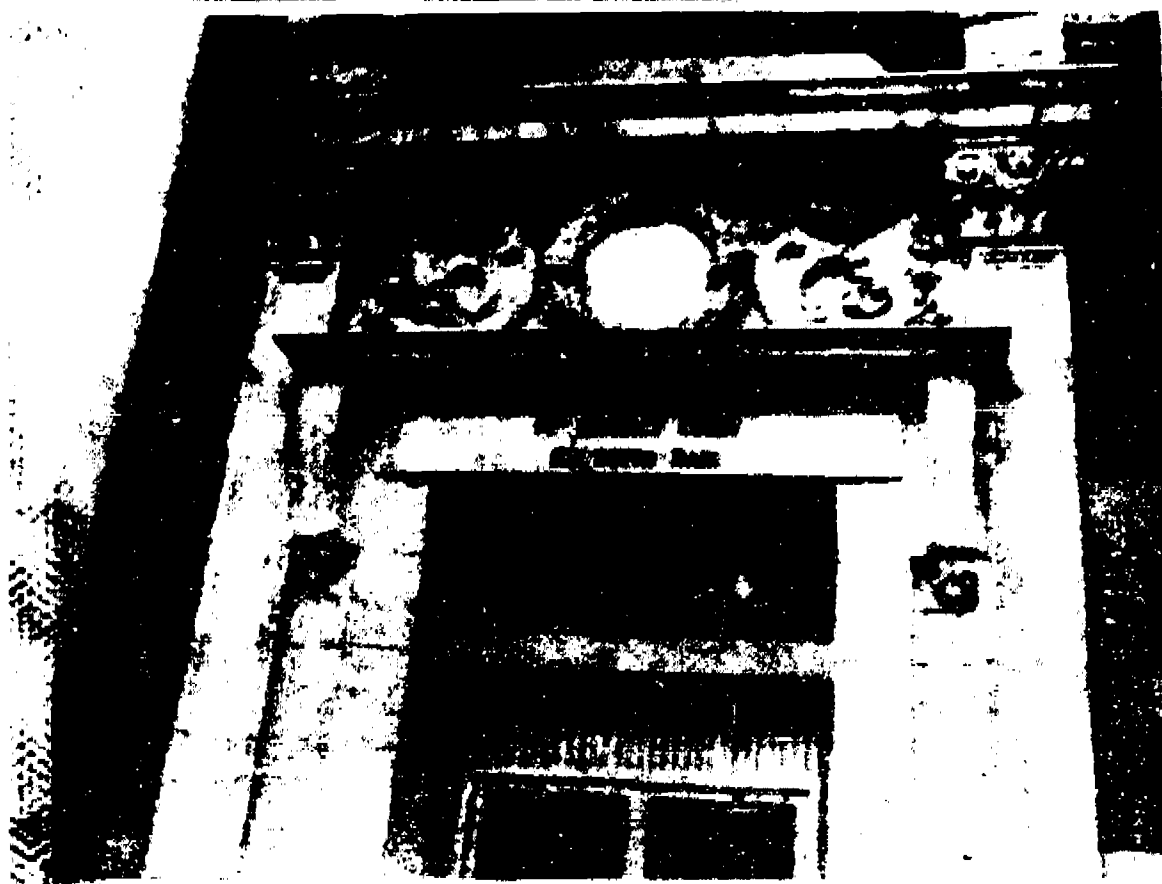
Dayspring Gifts

116 SOUTH MAIN STREET, CHELSEA
475-7501

116 S. Main St., Chelsea

Ph. 475-7501

Open Mon. & Fri. Until 8:30 For Your Convenience.



ONE OF THE IMPROVEMENTS for the more appropriate atmosphere on the venerable Chelsea District Courthouse will probably be a building.

Courthouse Architects Chosen

(Continued from page one)
Assistant village attorney, Jason Eyster, communications manager for the project, and Peter D. Flintoft, president of the H.C.D.C.

Other officers of the H.C.D.C., not present at the meeting, are James C. Hendley, vice-president, Randy A. Masbach, secretary, and Mark W. Gittinger, treasurer.

The H.C.D.C. Board of Advisors consists of John B. Swanson, former governor of the State of Michigan, Paul G. Schaeble, president, Chelsea State Bank, Dudley Holmes, Jr., vice-president, Chelsea Milling Co., Harold A. Jones, past president, Chelsea Historical Society, and Mark Heydlauff, chairman, Chelsea Downtown Development Authority.

The Chelsea Courthouse was originally built as a bank in 1908. It was donated to the county by Chelsea State Bank in 1968 and since that time has served as the home of the 14th District Court. Recently, the Washtenaw County Board of Commissioners approved funds to renovate the courthouse.

The county does not have sufficient funds to carry out restoration of the building.

tion of the remarkable plaster relief, the central dome and the oak flooring. For the building to be renovated with attention to its rich historical decor, additional funding is being sought from governmental and professional

sources as well as citizens of the community.

The Honorable Karl V. Fink, presiding judge of the Chelsea court, strongly supports expansion of the building and its services to the public.

School Millage Asked

(Continued from page one)
District voters approved the last rise in millage, in 1982, by a 1,000-1,000 vote.

"The schools are the focal point of the community and Chelsea has always supported its schools," Mills said.

"I'm confident that given the facts they'll continue to support the schools."

In a related issue, teacher and staff salary negotiations are scheduled to resume April 29, Mills said.

"There's been enough progress to justify additional meetings," Mills said.

He said both sides' major proposals are on the table and that he anticipates an agreement by the end of the month.

Since salaries are by far the largest chunk of the school budget, whatever figures are negotiated are sure to have a significant impact on the budget. Mills would not say what percentage

increase in pay the school board is anticipating.

Salaries for teachers with a bachelor's degree run from \$15,000 to \$28,000. For a master's degree the scale runs from \$18,500 to \$31,400.

34 Years Ago...

(Continued from page two)
Thursday, April 24, 1952--

After receipt of petitions from rural voters, action was taken to establish rural zoning district ordinances in Lima and Sylva townships. Leigh Beach, Lima township supervisor and chairman of the Washtenaw County Planning Commission, when asked the advantages of having zoning ordinances, said the ordinances will state clearly what the land in the township can be used for—whether residential, industrial, agricultural or commercial—and will have control over natural resources.

Henry Schumacher, returned from Florida to find 45 panes of glass broken in the building on W. Middle St. where he worked at his blacksmithing for almost 65 years. He felt that the school children, who he considered his friends, and who stopped on the way to and from school to watch as he worked at his forge, had no part in destroying the windows, unless they thoughtlessly followed misguided leadership.

A piano trio made up of Connie Steinbach, Judy Davison, and Nancy Atkinson presented several numbers at the Methodist church Mother and Daughter banquet last week. Toastmistress for the evening was Judy Summers, daughter of Mr. and Mrs. Calvin Summers.

Clay Owsley Completes Navy Recruit Training

Navy Seaman Recruit Clay G. Owsley, son of Joseph H. and Elaine F. Owsley of 3431 Pineview, Dexter, has completed recruit training at Recruit Training Command Orlando, Fla.

During Owsley's eight-week training cycle, he studied general military subjects designed to prepare him for further academic and on-the-job training in one of the Navy's 85 basic fields.

Owsley's studies included seamanship, close order drill, Naval history and first aid. Personnel who complete this course of instruction are eligible for three hours of college credit in Physical Education and Hygiene.

A 1980 graduate of Dexter High School, he joined the Navy in August 1985.

Please Notify Us
In Advance of
Any Change in Address

ZOA'S LOG CABIN LUNCH

6714 Clear Lake Rd., Waterloo
Tues.-Thurs. 11 a.m.-7 p.m.
Fri.-Sat. 11 a.m.-6 p.m.
Sun. 9 a.m.-5 p.m.
Mon.—Closed

All-You-Can-Eat Ocean Perch
Every Friday \$4.95

PIZZA

12" MED. 14" LARGE
CHEESE \$5.25 \$ 7.00
plus
1 ITEM \$5.75 \$ 7.75
2 ITEMS \$6.25 \$ 8.50
3 ITEMS \$6.75 \$ 9.25
4 ITEMS \$7.25 \$10.00
SUPER \$8.00 \$11.00
Phone 475-7169



COMPETITORS in the Miss Majorette of Michigan contest from the Chelsea Chorus were, from left, Elizabeth Maurer, Kate Steele, Tiffany Scott, Michelle Jones, Lindsay McIlhiney, Linda Schaffer, Kori White, Whitney Hampton, Laurie Hoshbaum, Tracy Wales, Rhonda Jones, and Chrissy Dunlap.



PLACE WINNERS for the Chelsea Chorus of the Miss Majorette of Michigan Contest were, from left, Michelle Jones, top two, Laurie Hoshbaum, first in modeling, Kate Steele, first in solo, Rhonda Jones, first runner-up, Kori White, second runner-up, and Chrissy Dunlap, first runner-up.

Chelsea Chorus Compete in Miss Majorette State Contest

The annual "Miss Majorette of Michigan" contest was held at Mt. Clemens on April 12 with two Chelsea Chorus taking first place in the preliminaries but disappointed in the finals with no title to return to Chelsea.

"Miss Majorette" is determined by the combined scores of model, twirl, and fancy strut and the winner in each age division represents Michigan at the national in July.

Chrissy Dunlap (12) ended in a tie for the title being broken by the higher solo score. She placed in the preliminaries: model (2), strut (2), solo (5). This is the fifth year she has held the runner-up position.

Six-year-old Rhonda Jones also ended in second place, having placed model (3), strut (3), and twirl (5) in the preliminaries for beginner-B-C.

In the advanced division, Kori White, (9) took third in all categories and ended in over-all third.

Winning first in the model division, Laurie Hoshbaum, (12), placed fifth in strut and a very disappointed seventh in solo, placing her over-all fifth for the intermediate title.

Nine-year-old Kate Steele stole the preliminary solo division with a superb "no-drop" capturing first place in twirl. She ended in seventh place for the beginner title.

Lindsay McIlhiney, 8, placed solo (5), strut (6) and twirl (4).

(Continued on page five)

**BUY - SELL - TRADE
NEW and USED**

- GUITARS
- WIND INSTRUMENTS

J & L MUSIC

121 W. Main St.
Southbridge, MI
Ph. (517) 691-7380

Hours
10-6 Mon.-6 p.m.
Sat. 10:30-4:30

Standard Want Ads Get Quick Results!

TRY BEFORE YOU BUY!

MULTI-LINE AID DEALER!

We sell and service most major brands of hearing aids

- Bush • Phonix • Starkey • Tele

CHELSEA HEARING AID CENTRE

• Hearing Aids • Batteries • Accessories •

35 Chestnut Dr. • Suite A

313-475-9169

Telephone Secretary 688-6988

Open Saturday 9:30 to 2. Evening by Appointment
We accept third party billing



HOMEOWNERS
BOAT
LIFE
RENTERS

JACK SCHLAFF AGENCY

426-3516

9 a.m.-6 p.m. Monday-Friday

7444 Dexter-Ann Arbor Rd.
Dexter, Michigan

SUNDAY BRUNCH

Chelsea Community Hospital

Main Dining Room

Sunday, April 27, 1986

Breakfast 7:00 a.m. - 11:00 a.m.
Lunch 11:30 a.m. - 2:00 p.m.
Dinner 5:00 p.m. - 9:00 p.m.
Adult \$5.00 Children \$3.00

Full Breakfast Menu

Entrées: Chicken A-la-King with Biscuit, French Dip Sandwich, Angus Peas with Mushrooms, Escalloped Potatoes, Eggs Benedict, Scrambled Eggs, French Toast, Bacon, Sausage Links, Bagels, Muffins, Toast, Full Salad Bar, Full Dessert Bar

Free Parking! No Reservations Necessary!

We Do Windows SALE

30% off

NORMAN'S
OF SALISBURY
CUSTOM
DRAPERIES
WINDOW TREATMENTS
BEDSPREADS

Markel
Custom Windows

FURNITURE
AND CARPET
MAIN STREET IN CHELSEA
PHONE 475-8621 or 1-800-482-3650
OPEN MONDAY & THURSDAY UNTIL 8:30

ALL CHILDREN'S CLOTHES

20%
off

Thru Saturday, April 26, 1986

DANCER'S

Chelsea's Friendly Dept. Store



SPAUDING FOR CHILDREN has been honored by the Michigan Federation of Private Child and Family Agencies as having the innovative program of the year among adoption agencies. Spaulding provides homes for developmentally disabled children and black teenagers.

Accepting the award for Spaulding are, from left, Bertha Scott, Detroit program manager, Judith McKenzie, executive director, Paula Blanchard, and Dr. Jane Swanson, national center director.

Spaulding for Children Cited For Innovative Program

Spaulding for children, an adoption agency with headquarters in Chelsea, has been honored by the Michigan Federation of Private Child and Family Agencies. At a luncheon held in Lansing, Paula Blanchard, Michigan's First Lady, presented Spaulding with the award for "Innovative Program of the Year—Adoption."

In recognition of Spaulding's excellence in providing adoptive homes for developmentally disabled children and black teenagers, the agency received a federal grant to establish the National Resource Center for Special Needs Adoption. Dr. Jane Swanson has been selected as director of the center.

Supreme Court and former governor, G. Mennen Williams, presided as Master of Ceremonies. Joining him in attendance were several other Michigan Supreme Court Justices, many State legislators including Lana Pollack and Perry Bullard of Ann Arbor, and Secretary of State, Richard Austin.

Eight Chelsea area residents are actively involved with Spaulding for Children. They include Robert Daniels, treasurer and chairperson of the National Center Committee; Charles Mattioli, board of trustees and finance chairperson; Dorothea Plemeier, charter member of the board of trustees; Fred Mills, personnel committee; Ann Feeney, business manager; Marilyn Cheaten, development director; Nancy Burkhalter, executive assistant; and Robert Schreier, maintenance.

Sheriff's Dept. PAL Run Set Saturday

Dig deep in the pocket for an extra dollar if you neglect to register beforehand for the PAL Run (seventh annual) sponsored by the Washtenaw County Sheriff's Department, Saturday, April 26.

Advance registration is seven dollars, but runners may register the day of the race—it just costs them that extra buck, that's all.

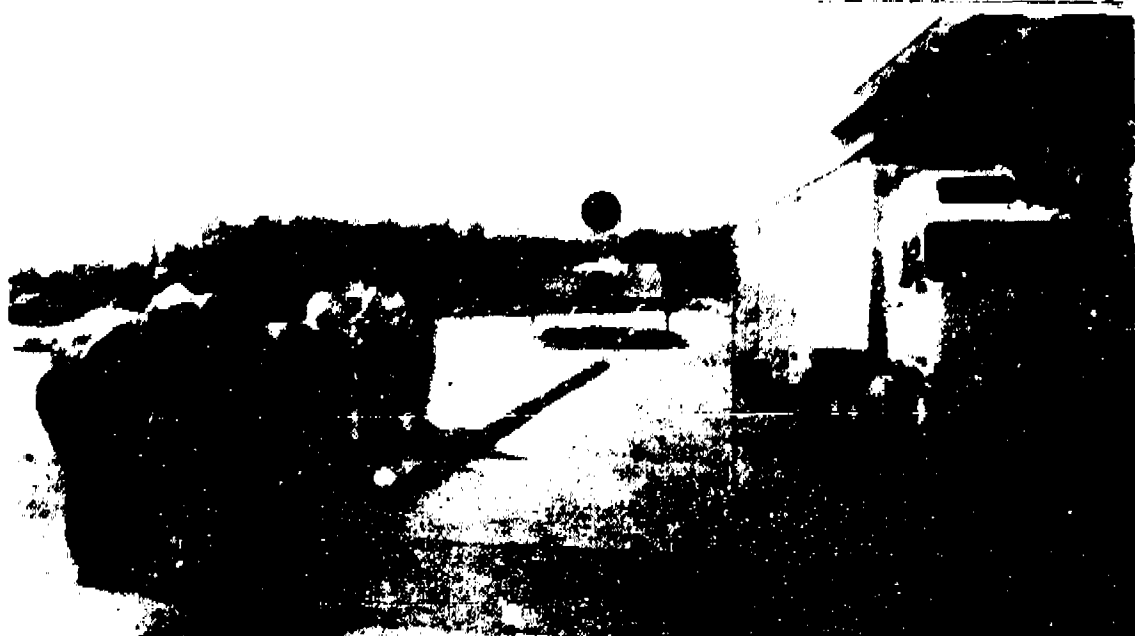
Check-in time for the race is 8:30 a.m. at the County Service Center on Hogback Rd. Runners begin competition promptly at 10 a.m.

Race course length is 10,000 meters, but an alternate run of 2.2 miles is available to less persistent participants.

Proceeds will help fund youth programs within the county. Registered runners will qualify for a host of prizes to be awarded during the race day.

Further details are available from the office of Sheriff Ronald J. Scheff, 971-9400.

Please Notify Us In Advance of Any Change in Address



JOE SETTA of the Wolverine 76 Truck Plaza in Dexter, gave North Lake pre-schoolers a first-hand look at the big semi-trucks. Mums and

children wait for a chance to climb into a big rig and take a turn at the wheel.

Red Cross Volunteers Needed for First Aid Station Staff at Fairs

It is spring and outdoor activities will soon be in full swing. The American Red Cross, Washtenaw County Chapter (A United Way Agency) provides First Aid Stations for many community events spring, summer and fall. Events such as the Fourth of July Fireworks, Ann Arbor Art Fair, the Ypsilanti Heritage Festival, Dexter Days, Manchester

Chicken Broil, the Chelsea, Saline and Milan Fairs, various runs and other events are all attended by American Red Cross volunteers trained in first aid and CPR.

If you are trained in first aid and/or CPR and would like to volunteer for first aid station staffing, please contact the Educational Services Department, at the American Red Cross, Washtenaw County Chapter, at 971-8800.

Partake board, fiberboard, and plywood pumpling can emit formaldehyde gas which causes eye, nose, and upper respiratory tract irritation, headache, nausea, and is implicated as a possible cause of nasal cancer in humans.

WERE OPEN 24 HOURS 7 DAYS/ WEEK

For Your Inspection

Our "BIG LOT" is ALWAYS OPEN for you to browse (even after normal business hours). No salesmen, no fences — no chains — no blocked off driveways. Look them over at your convenience, then come back during normal business hours to make "YOUR BEST DEAL."



STEVE SMYTH

DON POPPENGIER MGR

Only minutes away. Located 1 mile north off I-94 Exit 159. Always a great selection. Warranties included with or available on most vehicles.

Always over 40 to choose from

CARS/TRUCKS...

1976 FORD LTD Wagon	5995
1977 FORD LTD Wagon	995
1977 THUNDERBOLT — Quick Sale	51,495
1978 FORD LTD II, excellent transportation	51,695
1979 VW RABBIT — front wheel drive	51,995
1977 BUICK LeSabre — Full size	51,995
1979 FAIRMONT FUTURA — Flip roof	52,495
1981 ESCORT WAGON, automatic trans.	52,495
1980 VW RABBIT, beautiful	52,995
1980 MUSTANG, 3 door, auto, and air	53,695
1981 GMC PICKUP, C1500 series	53,995
1982 MERCURY LINN — Sporty 2-seater	54,495
1984 FORD Escort 2 dr., locally owned	54,695
1982 GRANADA WAGON, family size	54,995
1983 FORD Escort Wagon, auto with air	54,995
1983 FORD F 150 Pickup, priced cheap	55,495
1983 BUICK Skyhawk wagon, perfect size	55,495
1984 FORD Escort 4 dr., only 11,000 miles	55,995
1984 FORD F 150 Super Cab, automatic	57,495
1985 DODGE Aries, automatic with air	57,495
1983 MERCURY Grand Marquis 4 dr.	58,995
1985 FORD Ranger XL 4x4 with air	59,995
1985 MERCURY GRAND MARQUIS 4 door	59,995
1985 THUNDERBOLT turbo coupe	511,900
1983 LINCOLN CONTINENTAL 4 door, only 10,000 miles	517,900
1983 LINCOLN CONTINENTAL 4 door, designer series	518,900

PALMER FORD MERCURY

OPEN: Mon. and Thurs 'til 8:30 p.m.
Saturday 'til 12:30 p.m.

In Washtenaw County since April 15th, 1912

CHELSEA 475-1800

SUPER COUPON SALE

CARQUEST

AUTO PARTS STORES

Carquest Motor Oil
10W-30, 10W-40, 10W-60
59¢

Champion Spark Plug
Get 25¢ off in Photo on Carquest Spark Plug.
59¢

1995

With This Coupon

795

FREE

With This Coupon

14.95

With This Coupon

19.95

With This Coupon

54.99

With This Coupon

129.95

With This Coupon

36.95

With This Coupon

the Parts peddler

AUTO SUPPLY STORE, INC.

DEXTER

2902 BAKER RD.

426-4688

OPEN DAILY, 8-6

CHELSEA

1414 SOUTH MAIN

475-9106

OPEN SUNDAYS, 10-2

PRICES. COUPONS GOOD THRU MAY 3, 1986

Arbor Days To Be Observed With Symbolic Tree Plantings

Arbor Days will be observed Friday and Saturday of this week. Their immediate benefits will be the experience for hundreds of youths in the Chelsea school system of planting live spruce seedlings. Lifetime benefits will continue as children grow to adulthood and behold the development of frail seedlings to great symmetrical evergreens.

The actual planting of these trees will take place Monday, April 28. Originally scheduled for Friday, the ceremony was delayed until Monday because of delivery problems.

The Chelsea Rod and Gun Club is donating 50 blue spruce seedlings to each of the four public schools. These are purchased by the club through the Washburn County Soil Conservation District.

In addition, the club is donating mature blue spruces to Beach Middle School to replace four trees planted last year which failed to survive. An additional five mature spruces, averaging five feet in height, are being donated to St. Mary's of Chelsea. Deacon Richard Cesarz of St. Mary's will participate in the transfer of the trees from the club forest to the grounds of the church on Old US-12.

Each of the nine trees mentioned above was selected and tagged by Joe Torrice, chief forester of the Rod and Gun Club. Wednesday morning each tagged tree was inspected by Jean Meiner, an inspector for the State Department of Agriculture. Although it was the 18th of April, the boughs were heavy with snow which had to be brushed away. All nine of the spruces passed inspection but one was tagged for special disinfection after replanting.

Last year, with the approval of Village Council, President Jerry Satterthwaite issued a proclamation designating the last Friday and Saturday in April each year as Arbor Days. The proclamation began by noting that Chelsea had been distinguished for more than 150 years by the beauty of its trees; that some had perished and needed replacement; that many areas within and beyond the village are barren and would be greatly enhanced by the presence of living trees and shrubs.

Individuals, families or organizations seeking information on the planting and care of trees are advised to follow this list of Do's and Don'ts from the county soil conservationists:

The Do's of Planting Trees

DO water your trees freely the first year. Saturate the soil at least weekly the first year.

DO mulch around your trees. Mulch on the surface will hold moisture in the soil.

DO plant your trees as soon as possible after they are received. If you can't, be sure to keep the packing material moist and store the seedling in a cool spot.

DO look up when choosing a spot for a shade tree. Are there overhead utilities such as power lines? When the tree is fully grown will it be too close to your home and near the siding or dump leaves in the gutters?

DO control weeds and grass around your trees. Your newly planted trees will not compete with established vegetation.

DO protect your small trees from lawnmowers and other equipment. They are small and will be hard to see.

The Don'ts of Planting Trees

DON'T fertilize your seedlings the first year.

DON'T put mulch in the hole with the roots of your tree. Mulch will absorb the moisture and dry out the roots of your tree.

DON'T let the roots dry out when planting your trees. Carry them in a pail of water, removing one plant at a time as planting progresses.

DON'T plant trees over under-

ground utilities such as sewers and tile. Also, tree roots are powerful and can lift or break sidewalks and foundations if planted too close to them.

DON'T plant your trees more than 1/4 inch deeper than they were in the nursery. Holes for the trees should be large enough that the roots are not bent.

DON'T choose a tree just because it is supposed to be fast growing or "you like it." Choose a tree that has form, color, flowers or fruit that fits your needs well and will grow well in your soil and climate.

Aquatic Insects To Be Studied in Waterloo Area Walk

The world of aquatic insects—striders, whirligigs, dragonflies and more—will be the subject of a walk through the Waterloo Recreation Area this Sunday afternoon.

Ron Frenette will lead the walk beginning at 1:30 p.m. at the nature center parking lot. Participants should be prepared to get their feet wet.

A vehicle permit is required for the park.

Subscribe to
The Chelsea Standard!



APRIL 28th SNOWY ALL complimented the work of Jean Meiner, an inspector for the Michigan Department of Agriculture, as she inspects selected spruce trees from the forest of the Chelsea Rod and Gun Club. Nine trees ranging in height from four to six feet will be Arbor Day gifts from the club to Beach Middle School and St. Mary's church.



DEACON RICHARD CESARZ gets acquainted with one of five evergreens donated to St. Mary's Church by the Chelsea Rod and Gun Club in observance of 1986 Arbor Day.



SPRUCES FOR BEACH MIDDLE SCHOOL is dug from the ground by Benben Lesser, Jr., left, and Rick Mosker. Tree has been inspected and approved for removal by the state department of agriculture.

WHEN YOU NEED HELP!



**CALL
MATT
OR
RON
FOR
AUTOMOTIVE REPAIRS
THAT LAST
A LIFETIME**

(We Guarantee It!)





**LIFETIME
SERVICE
GUARANTEE**

The car repair guarantee that lasts for as long as you own your vehicle. The free Lifetime Service Guarantee. If you ever need to have your Ford, Mercury or Lincoln fixed, you pay once and we'll guarantee that if the covered part ever has to be fixed again... we will fix it free. Free parts. Free labor. Covers thousands of parts. Lasts as long as you own your vehicle. "Lifetime means the consumer's ownership period of his or her Ford, Lincoln-Mercury, Mercury or Ford Light Truck. "Ask us for a free copy of The Guarantee". This limited warranty covers vehicles in normal use. And excludes routine maintenance parts, belts, hoses, sheet metal and upholstery.

MICHIGAN'S OLDEST FORD DEALER SINCE APRIL 15, 1912



**FORD
MERCURY**

222 S. Main St., Chelsea

Hours: Mon., Thurs. & Fri. 7:30 a.m. to 5:30 p.m., Saturday 7:30 a.m. to noon
Special Line Direct To Service **475-1303**

DOWNTOWN CONVENIENCE



Wheel Horse Power

**ONLY
\$1599**

Without Mower

**FREE
LAWN CART**

FEATURES INCLUDE:
8 HP Kohler engine • 8-speed Uni-Drive™ transaxle • No-tool tach-a-matic™ hitch system • Manual attachment lever • Structural steel frame • Pinion & sector steering • Sealed beam headlights • Cast-iron front axle • Greasable spindles



Model 308-8

**ONLY
\$1299**

Without Mower

**FREE
LAWN CART**

FEATURES INCLUDE:
Smooth, Synchro-Balanced™ 11 HP Briggs & Stratton engine • 3-speed all gear trans-axle • Pinion & sector steering • Sealed beam headlights • Front and rear turf tires • Medium-back seat • Deluxe trim • Steel frame • Cast-iron front axle • Greasable spindles



Model 211-3

**ONLY
\$1199**

SAVE \$100

FEATURES INCLUDE:
Key start • 8 HP Briggs & Stratton engine • Space-saving storage bars with pivoting battery • Tight 24" turning radius • Turf tires • Extended foot mats • 30" Mower deck with one-hand height adjustment



Model 108-3

**With the Purchase of Any
Wheel Horse Lawn or Garden Tractor**

10 cu. ft. Lawn Cart



\$149⁹⁵

FREE
Value



110 N. Main St., Chelsea Ph. 475-7472

Open Tues.-Thurs.
8:30 a.m. & 5:30 p.m.
Mon. & Fri.
8:30 a.m. to 8:30 p.m.

The Chelsea Standard

Section 2

Chelsea, Michigan, Wednesday, April 23, 1986

Pages 9-20



STUDENTS AGAINST DRUNK DRIVING chapter at Chelsea High school recently received a donation from the Kiwanis Club of Chelsea to help them continue their activities. Above, SADD

president Gary Johnson and vice-president Sara Noah accept the check from Warren Atkinson, right, Kiwanis second vice-president, while Kiwanis president John Mitchell looks on.

Kiwanis Club Joins in Food Collection

Kiwanis Club of Chelsea is taking part in a state-wide Kiwanis campaign to collect food for area food banks.

The club is working in a joint effort with Faith in Action through May 18.

Anyone who wishes to donate non-perishable food may contact any Chelsea Kiwanian, Kiwanis president John Mitchell, at 475-1444, or stop by Faith in Action, 775 S. Main St. on the grounds of Chelsea Community Hospital.

Gov. James Blanchard proclaimed April 19-27 as "Say Yes To Michigan Food Banks Week." The Kiwanis program was launched in conjunction with it and is entitled, "Operation Care and Share."

Blue Cross/Blue Shield have also donated the use of their 30 offices as central collection points.

Free Blood Pressure Screenings Offered

Catherine McAuley Health Center will offer free blood pressure screenings from 8 a.m. to 1 p.m. Saturday, May 3, in Ann Arbor's Kerrytown, 407 N. Fifth Ave.



THE CONTEMPORARIES earned straight I ratings at the State Solo & Ensemble Festival held on the University of Michigan Flint campus April 12. Judges comments included, "very nice, freely preceded tone. Fine blend, balance and accuracy of parts. Phrasing admirable. Lovely group, well-trained and musical. Congratulations." Kristina Steffensen, a soloist, also received straight I ratings. "I was extremely proud of their effort," said vocal music director June

Warren. Sitting, from the left, are Karla Beard, Krista Smith, and Chris Basso. Standing, from left, are June Warren, Kelly Burke, Carrie Collinsworth, Valerie Stoker, Lori Jodelle, Maria Gallus, Susan Schumak, Jinne Ritter, Amy Wollgast, Jeanine Castillo, Cindy Kvarnberg, Martha Weber, Kristina Steffensen and Angie Welch. They'll be performing at this Saturday's arts festival at Chelsea High school.

Village Rubbish Pick-Up Slated Next Monday

Chelsea's annual spring rubbish pick-up will be held next Monday, April 28.

Village residents may place their rubbish on their lawn extension beginning this week-end.

The village is asking residents to place their refuse in separate piles according to the type of material. A village advertisement elsewhere in this issue provides the details.

Standard Want Ads
Get Quick Results!



A VAN TO AID REHABILITATION has been purchased by Chelsea Community Hospital. It is equipped with a lift to accommodate two people in wheelchairs. The van will make it easier for them to get out into the community.

Special Van Purchased By Chelsea Community Hospital

New frontiers are now open to Chelsea Community Hospital Rehabilitation Program patients.

The hospital has acquired a new van which is equipped with a lift to accommodate two people in wheelchairs. This will make it possible for rehabilitation patients who have been hospital-bound in the past to get out into the community to practice the things they are learning in their therapies.

For example, rehabilitation patients, many of whom have had a stroke or head injury, will be able to travel to restaurants, stores and sporting events along with a

therapist where they can practice the walking, communication, thinking, and leisure education skills that they have been working on. Called "community reintegration," the ability to go out into the community and practice therapy techniques in real-life situations is a vital addition to the program. "It fulfills a need that we have had for five years," says Dr. Lawrence Handelsman, medical director of the rehabilitation program. "It will be wonderful for our patients to acquire the skills that come from community practice with a therapist."

The acquisition of the van will have a positive effect on the work of the entire rehabilitation team which consists not only of nurses and doctors but also of experts in the areas of social work, psychology and physical, recreational, speech and occupational therapies. Patients come to the rehabilitation program from Washtenaw, Jackson, Lenawee, Ingham, Hillsdale, Monroe, Wayne, Livingston, Oakland and other communities. They will be able to function better in their home communities now that Chelsea Community Hospital can provide additional community

(Continued on page 13)



**NEED CASH?
LET'S TALK.**

WE HAVE MONEY TO LOAN.

The one way we have of keeping our doors open is to make loans. Loans to people like you. Loans that better your lifestyle. Loans that assist you over the rough times.

The second way we have of keeping our doors open is to know when to say, "No". If it isn't a good loan for you, it isn't a good loan for us.

Our loan people aren't simply trained on the procedures of loan making. Our loan people are thoroughly schooled on the importance of recognizing when a loan should be made and shouldn't be made.

We may say no when someone else says yes. We can be wrong. The other financial institution can be wrong. Usually, though, we're

right and people appreciate us for our up-front-let-us-help-you attitude.

So, when you are thinking of a loan, stop in. Let's talk it over. If it's right, we'll make the loan. If it isn't, we'll tell you. Could you ask for more?

CSB CHELSEA STATE BANK

Branch Office
1010 S. Main

Member F.D.I.C.

Phone 475-1355

Main Office
305 S. Main

ROBERTS PAINT & BODY

**NEW LOCATION:
610 E. INDUSTRIAL
CHELSEA, MICH.**

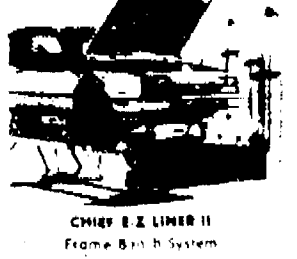
We have installed some of the most sophisticated equipment in auto body repairing & refinishing.

**AUTO GLASS INSTALLATION
FASTER PROFESSIONAL SERVICE
DOMESTIC & FOREIGN
INSURANCE WORK WELCOME
FRAMES STRAIGHTENED**

FREE ESTIMATES

PHONE 313-475-1149
PHONE 313-475-3443

JAMIE BOYER (Manager)

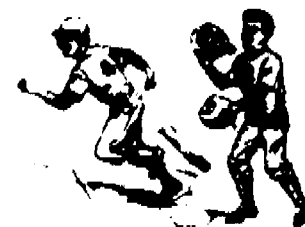


CHRYSLER LINER II
Frame Brish System



OPTIMA
Downdraft - Bake Oven

SPORTS



Varsity Baseball Team Sweeps Double-Header Over Manchester Dutch

Chelsea varsity baseball team raised its record to 4-2 last week with a sweep of a double-header over Manchester last week-end, 10-1 and 13-3.

In other action last week, the Bulldogs lost to undefeated Jackson Northwest, 5-1, and shut out Fowlerville, 2-0.

The Bulldogs were also well on their way to two more wins for the week, but both games were called due to darkness before enough innings had been played. In the second game against Jackson, Chelsea led 5-1 after three innings with Kevin Wals on the mound, and 6-1 after four innings in the second game with Fowlerville with Greg Haist pitching in relief of Chuck Downer.

"We're right where we want to be right now," said Chelsea coach Wayne Welton. "Our bats have come alive and our pitching is solid."

Chelsea played probably their worst game of the year against Jackson, a team with a top pitching staff that doesn't need any additional help from their opponents.

Kevin Maynard started the game on the mound for the Bulldogs but had control problems. Haist and Harvey pitched in relief.

"The pitching of Haist and Harvey was probably the highlight of the day," Welton said.

The game was tied at five at the

end of the third inning before JNW scored four times in the fourth inning on three walks, one hit, and three Chelsea errors. Before the fourth inning Chelsea had committed one error. They finished the game with six.

"We lost the game defensively," Welton said. "But we hit the ball well with 10 hits."

Downer picked up three Chelsea hits. Mark N'ill and Ray Spencer both hit triples, and Todd Starkey hit his first home run of the year.

Haist hit a home run in the second game before it was called due to darkness.

In the Fowlerville game, Dan Bellus "was outstanding," Welton said after the senior tossed a one-hitter, hit a triple and scored the game-winning run.

Bellus had superb control and went the distance, striking out 10 and walking one.

In the fifth inning, Bellus tripped over the centerfielder's head, and scored on a Spencer single. Mull doubled in Maynard, who had singled, in the sixth inning for the final run.

Bellus recorded his second win against no losses.

Harvey had his second good outing of the week in the first Manchester game Saturday as he allowed only four hits for the complete-game shutout. Welton said he may have earned a start against Saline this Saturday in the first league contests.

Chelsea jumped off to a quick

start in the game with three runs in the first inning.

Rob Murrell singled, and Downer homered for the first two. Maynard followed with a triple and Mull got an RBI on a sacrifice.

The Bulldogs pounded out 11 hits for the game. Maynard went 4-4, Downer had three hits and Bellus added a triple and single.

Chelsea was even hotter with the bat in the second game with 10 hits.

Starkey picked up his first win after a shaky start.

Down by a couple runs going into the second inning, Wals singled and Jeff Stacey was hit by a pitch. Matt Koon plated the first run with a single, and Downer cleared the bases with a triple. Downer came home on Bellus' single. The Bulldogs scored four in the inning, and were never seriously threatened from then on.

In the fourth inning Chelsea added five runs. Mark Barck reached on an error, Mull singled, Bellus walked and Spencer tripled. Wals then singled, and later scored.

Finally, Chelsea scored four more in the fifth on singles by Barck and Mull, walks to Matt Bohlander and Jon Lane, a two-run single by Jeff Stacey and a single by Matt Koon. Koon had four hits as the designated hitter.

Chelsea swings into Southeastern Conference action this Saturday against the tough Saline Hornets in Saline.



DAN BELLUS cuts loose with a fast ball against Fowlerville last week on the home field. Bellus pitched a one-hitter and scored the game-winning run after whacking a triple.

Girls Track Team Dominates Saline

Chelsea's Lady Bulldog track team defeated Saline, 79-49 in a meet Thursday on the Saline track.

Led by Chris Zerbel's two wins—the shot, with a throw of 34'-8" a junior record, and the discus in 97'-1", and seconds by Dana Stevens in the discus, Edie Horack in the long jump and Ann Becker and Sarah Schoeffert in the high jump, the Bulldogs took a 21-15 lead in the field events.

Kasey Anderson anchored a come-from-behind win in the 1,200 relay, and the Bulldogs rolled on from there. Key 1-2 finishes were posted by Tami Harris and Danica Disbro in the 100 and 200 dashes and Susan Jaques and Chris Newman in the 400.

Chelsea also won three relays:

the 1,200 with Salie Wilson, Debi Koon, Melanie Flanagan, and Kasey Anderson (10:28.7), the 800 with Susan Jaques, Amy Wolfgang, Danica Disbro and Tami Harris (1:24.4) and the 1,600 with Chris Newman, Debby Tiff, Kasey Anderson and Amy Wolfgang (4:21.2). Anderson was the only other Chelsea winner, running the 800 in 2:22.8.

Kelly Chaszewski was a double winner for Saline in the 100 hurdles in :18.5 and the 200 hurdles in a record :37.8. Chelsea finished second and third in each race.

The key factor in the meet was Chelsea's balance. The Bulldogs performed well in all areas and had either a first or second in every event.

Tennis Team Splits Season's First Matches

Chelsea boys tennis team split in its first two matches of the season, with a 3-1 win over conference foe Pinckney, and a 3-2 loss to Brooklyn Columbia Central.

The Pinckney match was called due to darkness in the middle of the fourth singles match, which is scheduled to be completed this week.

In the Pinckney match, Kirk Lawton at first singles won 7-6, 6-0 over Todd Barkman.

Bodo Schlaeper, at second singles, lost to Tony Ketz, 3-6, 6-2, 1-6.

Third singles John Stevens held off Tony Carpenter, 7-5, 6-1.

Jason Richardson lost the first set of the fourth singles match, 4-6, to Kevin Banchoff, before the match was suspended.

In doubles play, Chelsea's Steve Worthing and Chris Herter defeated Steve Tresh and Robert Romano, 6-1, 4-6, 6-4.

Larry Moore and Mike Merkel, at second doubles, stopped Dustin Schell and John Yeakey, 6-2, 7-5.

At third doubles, Bob Pratt and Eric Worthing defeated Jack Lonetto and Doug Hora, 6-2, 6-2.

"We didn't play outstanding tennis, but enough to get by,"

said Chelsea coach Rahn Rosentreter.

Rosentreter said BCC featured some of the best tennis players in the area, and, as a result, Chelsea had a tough time.

Lawton was shut out by Rich Applegate, 6-0, 6-0.

Schlaeper lost a tough match to Mureli Tegulapelle, 6-1, 6-1.

John Stevens lost at third singles to Al Dresselhouse, 6-2, 6-0.

Jason Stevens lost by the same score to Reddy Tegulapelle.

The first Chelsea victory came in first doubles, where Steve Worthing and Herter topped Art Townley and Shane Force, 6-4, 6-2.

Moore and Merkel took second doubles, 6-2, 6-1, over Tony Gabriel and Paul Arnold.

At third doubles, Pratt and Worthing were defeated by David Zaski and Ray Taylor, 6-4, 7-5.

"The bright spot was definitely our doubles play," Rosentreter said.

"Singles were not playing poorly, they just had a bad match-up."

Tomorrow's re-match with Pinckney is one of the key contests of the season, Rosentreter said.

Boys Track Team Closing on Saline

After losing to Saline by nearly 100 points last year, the Chelsea boys track team narrowed the gap considerably last week in an 85-54 loss without three of their top scorers.

"With those three guys, it's conceivable we could have won the meet," said coach Bill Wehrwein.

In other action last week, the team took part in the 30-school Bishop Foley relays on Saturday. In the Saline meet, three field events performers turned in their best-ever efforts.

Doug Webb won the discus with a toss of 110'.

Chris Cheng was second in the long jump at 17' 10".

Mike Westhoven was second in the high jump at 5' 10".

Chelsea also won three relay events.

The 400-meter relay team of Pete Janik, Jeff Patterson, Dave Freitas and Cheng had a time of :47.7.

Cheng, Lee Riemenschneider, Greg Brown and Ron Bogdanski took the mile relay in 3:43.

Riemenschneider, Brown, Paul Hedding, and Bogdanski won the two-mile relay in 8:42.

In individual events, Freitas won the 200-meter dash in :24.7.

Hedding won the mile run in 4:52 against a strong wind. He

(Continued on page 11)

Lady Bulldogs 2nd In Chelsea Relays

Ypsilanti ran away with the team championship in the 11th annual Chelsea Girls Relays Saturday, with 96 points to runner-up Chelsea's 87.

Ypsi scored in all but one event, of the 12 events taking nine firsts and one second on their way to the title.

The Bulldogs were no match for the class A power, but turned in an excellent showing, scoring in all but two events. Although they did not win an event, Chelsea runners gathered six seconds, a third, two fourths and a fifth.

"Take Ypsi out of the field and we have about 80 points ourselves," said coach Bill Reinton. "We had an outstanding day!"

Milan gave Chelsea a battle for a while, but scored in only one of the final three events to finish third with 43 points, while defending champion Dexter was fourth in the 13-team field with 27 points.

Placing for Chelsea in the field events were the high jump relay of Ann Becker and Sarah Schoeffert who finished sixth, and the discus team of Chris Zerbel and Dana Stevens who finished second. Zerbel's 97-foot throw in the event was the second longest of the day.

Bulldog runners scored in every running event in the meet. Ypsi was the only other team to do that. "That points out our balance and depth," said Reinton. "We had 15 girls score for us."

Chelsea had a second in the

shuttle hurdles from Debby Tiff, Shannon Dunn, Danica Disbro and Amy Wolfgang in 1:09.3.

The 3,200 relay of Salie Wilson, Debi Koon, Melanie Flanagan and Kasey Anderson was second in 10:11.6.

Despite some shaky baton exchanges, the 800 relay of Susan Jaques, Amy Wolfgang, Danica Disbro and Tami Harris was second with a fast 1:51.7.

The intermediate medley with Koon and Flanagan running 800's and Calise Tucker and Tiff running 400's, was fifth with a 7:41.4.

For the third consecutive year the sprint medley established a new school record. Tami Harris, Susan Jaques, Danica Disbro and Amy Wolfgang combined for a 1:16.5, good for second behind Ypsi.

Another school record was set by the distance medley of Kasey Anderson (800), Chris Newman (400), Suzanne Cooper (1,200) and Salie Wilson (1,600) as they finished second to Hillsdale in 13:33.1.

The 400 relay of Edie Horack, Stephanie Harris, Disbro and Harris finished fifth in :54.1 and the 1,600 relay of Jaques, Anderson, Newman and Wolfgang wrapped up the meet with a third place finish.

This was the Bulldogs' best showing in their own relays since winning them in 1982. They won third last year.



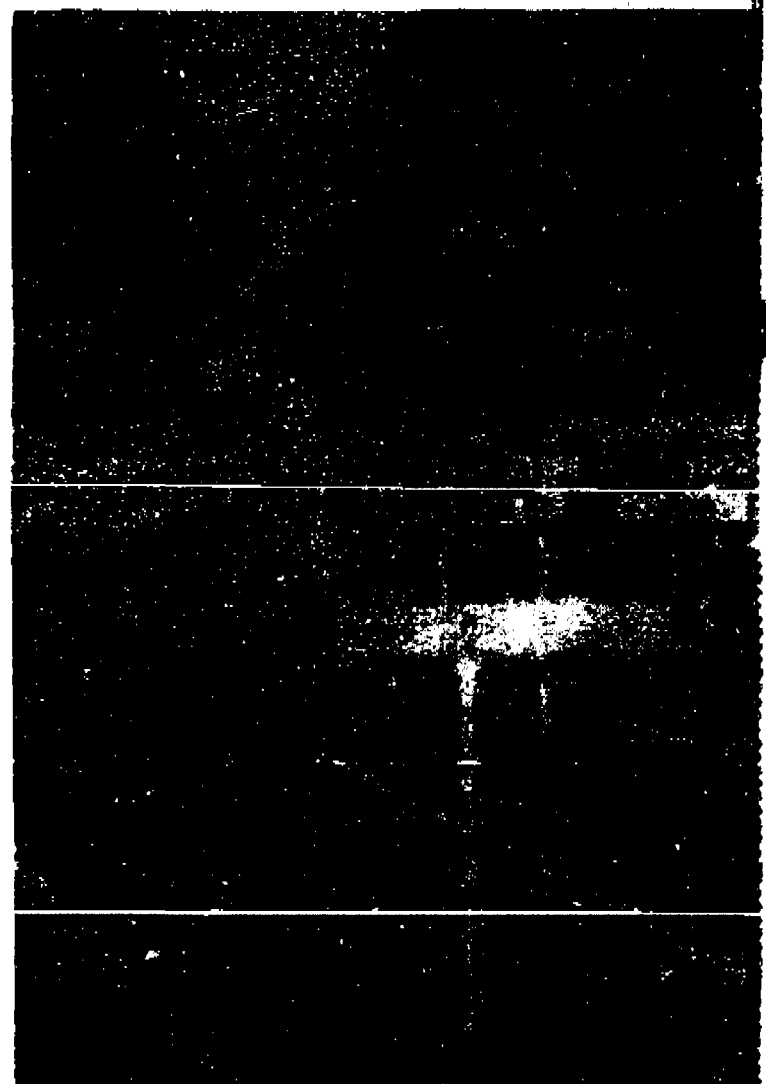
RAY SPENCER singles home the winning run against Fowlerville last week, as Dan Bellus scored from third in fifth-inning action. The

Bulldogs, at 4-2, travel to Saline this Saturday for their first SEC contest.



THE OLD BRUSHBACK PITCH sends Chelsea's Dan Bellus on his rear end during last week's action with Fowlerville. Dan's been hitting

the ball well lately, and may see a lot of similar pitches in future games.



AMY WOLFGANG runs the final leg of the shuttle hurdles during last week-end's Chelsea Relays. The team of Debby Tiff, Shannon Dunn, Danica Disbro and Wolfgang finished second in 1:09.3.



SUSAN JACQUES bursts from the blocks on the first leg of the sprint medley as her team set a new school record in the event in 1:16.5, good for second place. It was the third consecutive year the record has fallen. Her teammates included Danica Disbro, Amy Wolfgang, and Tami Harris.

Softball Machine Now 9-1 After Winning 5 of 6 Games in Past Week

Chelsea Bulldogs stretched their varsity softball record to 9-1 last week after knocking off Fowlerville on both ends of a double header, and taking three of four games at the Belleville Tournament last week-end.

In last Saturday's tournament action, Chelsea competed against four class A schools, Belleville, Carlson, Stephenson and South Lyon, and lost only to South Lyon, 2-0, to take the second place trophy.

Chelsea reached the finals after dropping Livonia Stephenson, 10-0, in six innings, Belleville, 2-1, in nine innings, and Carlson, 11-1, in five innings.

Junior Pam Brown, who hiked her record to 3-0, was simply too much for the Livonia team as she faced just two more than the minimum. She struck out six and gave up two hits.

"Stephenson wasn't really prepared to play against our bunting game," said coach Charlie Waller. "They gave us two quick runs in the first inning."

Rene Matloff added a run-scoring triple in the second inning, but the Bulldogs picked up six runs in the sixth inning, highlighted by a bases-loaded double by Chris Defant and an RBI single by Michelle Easton. Stephenson helped out with five walks in the inning.

Timothy Reed added two hits in the contest.

In the extra-inning contest with Belleville, Cain Murphy scored on a ground out to short in the top of the sixth inning for what proved to be the winning run.

However, it was a combination

of good defense and bad Belleville base running in the eighth inning which really won the game for the Dogs.

Belleville had runners on second and third with no one out when a long fly ball was lifted to left centerfield. Defant made "a fine catch," Waller said, and threw to second, doubling off the runner who had moved to third, believing the ball would not be caught. Meanwhile, the runner at third, who had advanced nearly to home plate, had to go back and tag up. After the double play, there wasn't any time to score. The next Belleville batter popped the ball up.

Brown picked up the win in relief of Defant, who pitched to the eighth inning. Combined they gave up eight hits and struck out two.

Jill Schaffner picked up her second win of the season in the 11-1 Carlson contest as she yielded four hits and struck out eight in five innings.

"It was a very nice performance by Jill," Waller said.

Chelsea took the early lead with three runs in the first inning on a two-run double by Defant and a single by Easton. By the third inning the lead was lengthened to 6-0. The Bulldogs rapped just six hits but were aided by numerous Carlson walks.

The final contest against South Lyon featured two of the area's best pitchers in Defant and Andrea Nelson. Nelson's tough fast ball was "too much, she threw it right by us," Waller said.

Nelson struck out nine Bulldogs and, "we don't strike out all that often," Waller said.

Chelsea threatened to score on several occasions but couldn't get the key hit.

Defant took her first loss of the season as she gave up five hits and struck out six.

"On any given day we'd have a good shot at beating them," Waller said.

"Over-all, our pitching is coming along and we're hitting the ball with authority, although we're having trouble scoring runs. We have several kids like Angie Defant who hit the ball hard but didn't have them fall in. I felt good about Saturday."

On Friday against Fowlerville, Defant picked up the first win with a four-hit, four-strike-out performance in 8 1/3 innings. Brown struck out the last two batters in the sixth inning.

The 6-3 victory was highlighted by a game-winning three-run single in the ninth inning by Defant, with the score tied at three. The Bulldogs were the beneficiaries of two Fowlerville errors in the inning, which helped to load the bases for Defant.

Chelsea rapped nine hits, including two by Hard, one a double.

Brown tossed a two-bitter in the second game and struck out six as Chelsea won the contest, 5-1. The game was called due to darkness after five innings.

The Bulldogs scored three runs in the third inning for most of the damage. Hard singled and Jenny Cattell tripled for the first run. Chris Defant singled home Cattell, and Easton sacrificed Defant to the plate. At that point the score was 4-0.

Murphy added a double in the contest.

Chelsea begins league play this Saturday at Seline, considered to be one of the top contenders for the SEC crown this season.

Amy Unterbrink Has 0.00 ERA in Big Ten Competition

Amy Unterbrink, a Chelsea High school graduate, improved her record to 17-4 as a softball pitcher for Jackson University with two 1-0 wins over Northwestern last week.

The new sports a 0.00 earned run average against Big 10 opponents.

Subscribe today to The Standard



PAULA COLOMBO capped off her high school swimming career recently by making the finals in seven events at the United States Swimming-Michigan State Championships as a member of the Ann Arbor Swim Club. Her events included a sixth place in the 200 individual medley, fifth place in the 100 freestyle, sixth place in the 200 butterfly, fifth place in the 200 backstroke, fifth place in the 200 freestyle, second place in the 200 butterfly, and sixth place in the 400 individual medley. This fall Paula plans to attend the University of Michigan and study nursing. "Paula's ability to dedicate herself both to her swimming and schoolwork is just outstanding," said coach Dave Johnson. "She will do very well in whatever she does, her aggressiveness is her biggest asset." She is the daughter of Lou and Marie Colombo of Cavanaugh Lake Rd.

JV Baseball Team Wins 4 in Past Week

Chelsea JV baseball team won four straight games last week over three separate opponents to raise their record to 5-1.

Jackson Northwest fell, 3-1, Fowlerville lost, 7-1, and Manchester was shelled twice, 18-5 and 12-1.

In the JNW game, Junior Morneau went the distance or the mound, striking out 10 in seven innings.

The Bulldogs were held to six hits, and Randy Perry had the only RBI for the game on a single in the first inning.

JNW batted the ball around in both the sixth and seventh innings, allowing one run in each. Matt Kemp contributed two hits.

Greg Boughton picked up the win in the Fowlerville game as he struck out nine in six innings, and was relieved by Kemp in the seventh.

Perry gave Chelsea a second-inning lead with a two-run single. The Bulldogs picked up two unearned runs in the fourth inning.

Morneau singled home two in the sixth, sparking a three-run inning.

Other offensive stars of the game included Bobby Clause, who was 3-4 with two stolen bases, and Jordan Gray, who tripled.

Manchester helped out the Bulldog cause in their first game by committing eight errors and walking just about as many Chelsea batters. That, combined with eight Bulldog hits, gave Morneau his second victory of the week.

Through four innings Chelsea held a 5-2 lead, but scored seven runs in the fifth and six more in the seventh.

Morneau accounted for four RBI with three hits.

Tim Anderson won the second Manchester contest, a game called after five innings due to the mercy rule.

Anderson struck out 11 and sur-

rendered just three hits.

Clay Hard attacked a lead-off home run in the first inning, giving Chelsea the lead for good.

In the third, Morneau and Perry each doubled home runs.

Five runs came home in the fifth on the strength of a Perry two-run homer and a Gray double.

Chelsea picked up their last three runs in the fifth.

Gray and Morneau were each 3-4 and Perry went 2-3. The Dogs picked up 10 hits overall.

"This is a good group," said coach Jim Ticknor. "If they continue to work hard and believe in themselves I think we'll have a pretty good season."

Boys Track ...

(Continued from page ten)

also had a time of 10:44 in the two mile.

Janik was first in the low hurdles in 43.7, and Casey Murphy finished third in 45.4.

Riemenschneider was third in the 400 in 55.7.

Brown was second in the 800 in 2:10.

"I see us winning this next year," Wehrwein said. "Most of our team will be back."

In the Bishop Foley Relays, the distance medley team of Bogdan-ski, John Cattell, Hedding and Cheng placed eighth in 11:10.

The only other team to place was the high hurdles squad of Jeff Andrews, Marcus Fletcher, Westhoven and Janik, who ran a 1:17.1.

"We just went to have fun," Wehrwein said. "There were a lot of class A schools, and I really didn't see us placing in any event."

Please Notify Us In Advance of Any Change in Address

JV Softball Team Mercies Fowlerville

Chelsea JV softball squad overpowered Fowlerville last week-end with two lopsided, mercy-rule victories, 17-0, and 20-2.

In the shutout, Peggy Hamerschmidt pitched her second no hitter in as many outings, as she struck out five batters.

"She had good defensive support from her teammates," said coach Pat Clarke.

Chelsea batted only four times, with the big outburst coming with a 12-run third inning. The Bulldogs pounded out 13 hits and committed just two errors.

Freshman Heather Neibauer and sophomore Angie Miller each had run-scoring doubles to lead the offense. Leah Enderle, Alisha Dorow, Neibauer, Miller and Laura Torres all had at least two hits each.

In the other contest, Jenny Pichlik fired a two-hitter and struck out nine to gain her second win of the season.

Chelsea took a 5-2 lead in the first inning and 12 in the second. The 29 runs came on just 14 hits as walks and four errors hurt Fowlerville.

Some offensive highlights of the game were Miller's bases-loaded double in the third inning

for three runs, and Linda Lauer hit a two-run triple in the fourth inning.

Enderle and Torres each had three hits, including a double for Torres, and Dorow and Hamerschmidt each had two hits. Kim Easton and Chris Basso each added hits.

SPORTS NOTES

BY BRIAN HAMILTON



I've always thought that the average boy or girl could learn more about life through a pick-up baseball game or basketball game than through any parent-organized sport.

In a pick-up game, the kids have to decide who plays, who plays where, and whether to call someone out or safe on a close play at first. All that requires political savvy, decision-making, and sometimes brute force. In an organized sport, all that fun is taken away.

The problem these days, especially with baseball, is there aren't many places for a good pick-up game anymore. Around here it seems like every daylight hour when the rain isn't falling all the good fields, and even the bad ones, are in use.

So in order to play a good game of baseball, a kid (his parents actually, has to pay the recreation department and get on a team.

It's too bad, but that's the way it is.

The next best thing to a pick-up game would be a recreation league that didn't have too much structure.

In fact, for me the ideal kind of league (for kids over about 10 years old) would be to give the kids some uniforms, tell them what field they're going to play on, give them an umpire, and tell the parents to butt out. The kids would be their own coaches. Suggest to them they might show up 15 minutes early to get organized. After that it's all up to them.

In my league, parents would be fined \$1,000 if they tried to become involved in the game. Chief Lenard McDougall and his squad would have to work over-time.

I'm confident that I'm probably in a teenie-weenie minority of people who feel this way. I just believe that many coaches and parents tend to organize a lot of the fun out of sports for children. Also, for many parents, the leagues seem to exist more for them than their children.

I know that my ideal league will never exist. But that doesn't mean I can't grouse about a few things that I've seen in rec leagues for kids over the years.

My biggest complaints about organized sports for youngsters really have nothing to do with the leagues themselves. Most of them have to do with parents.

As well-meaning as most parents are, for a kid, and a coach, they can be one big pain in the butt.

I'm no child psychologist, but I'd be willing to bet that if parents asked their children, "Do you really want me to come and watch you play," a sizable percentage would say, no. That's because when a kid has his parents in the stands, there's just that much more pressure to perform. The last people a kid wants to disappoint is his parents. It's bad enough when a ground ball goes through your legs and you're there by yourself.

Some parents are not content to sit and watch. At just about every game, there will or least be one parent who yells, "Get your glove down!" when a ball goes through the wicket. Most kids know that when the ball goes through their legs, nine times out of 10 it went under the glove. My personal favorite is when a parent yells to the pitcher, "Three strikes!" as though the kid is trying to walk every batter he faces. (This is not peculiar to kid's sports. Former Yankee pitcher Jim Bouton complained about the same sort of treatment by his coaches in his book "Ball Four.") I've heard a father yell at a coach to take a certain 10-year-old out of the game after committing a couple of errors. And 10-2 steps to wasn't the complainer's kid.

None of this friendly sidelines advice has ever helped a child play better ball or feel more confident about himself. A child's teammates also get nervous.

I wish parents would just shut up and applaud if they want to attend.

My other major gripe is with parents who push their kids too hard to be "winners." Some kids just want to have fun. They don't care about being the next Kirk Gibson, even if they do have more talent than other children. But the parent of a talented child sees stardom, college scholarships and pro careers, just like the parent of a talented pianist sees Carnegie Hall in his dreams. Certainly he must want "to have it all," they say, as the beer commercial suggests. Athletic fathers who never made the big-time can be the worst offenders. And there are a lot of those.

Sometimes that extra push takes the form of extra throwing in the evening, or sending the child to camp, or some other well-meaning activity. If a child feels pushed into participating, it can dampen his interest, or ruin it completely. But, if a child says, "Daddy, how about throwin' to me," that's a different story.

All of this is aided and abetted by organized leagues. With organized leagues come "standings." Which team is in first, and so on. And that translates to a pressure to win. Kids don't want to be last. Parents don't want them to be last. I've known parents who have requested their "talented" son be moved from a losing team to a winner. And I've heard of parents who asked that another "loser" child be put on a different team.

Coaches or parents who keep statistics for these leagues should be drawn and quartered. Individual stats for youth leagues serve no purpose except to tell one youngster he's not as good as someone else. Most kids already know that instinctively.

Youth leagues shouldn't be about comparing child to child or team to team. It should be about participating and having fun, just like a good pick-up game.

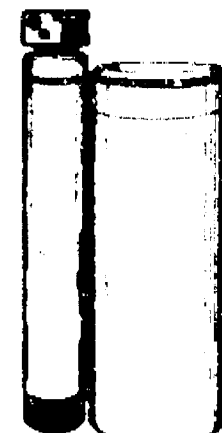
Now might be a good time for parents, especially fathers, to consider, or reconsider just what they want their children to get from a summer league. Chances are, the less you are actively involved, unless you happen to be the coach, the more your child will enjoy the game.

Tell Them You Read It In The Standard

You can have the benefits of soft water in your own home: Save money on soap and detergents while you are protecting your plumbing and appliances.

Purchase a reliable Culligan Softener for as low as \$16.00 a month.

Call Culligan in Ann Arbor at 662-5665



Standard Want Ads Get Quick Results!

The earlier the order, the better the selection! FOR PROMS, WEDDINGS

LAST ORDER DATE FOR CHS PROM: FRIDAY, MAY 9th

Order Now! TUX NOW from STRIETER'S MEN'S WEAR

DEXTER TRACK CLUB 3rd ANNUAL CHELSEA-DEXTER 8 Mile Run

CONTRIBUTOR Saturday, May 10, 1986

Tune-up for the Dexter to Ann Arbor Run. The 8 mile course is a combination of rolling hills on solid dirt, gravel and paved roads. It is a course that has conditions and scenery for all interests.

For entry forms contact:

Dexter Track Club, 2615 Baker Rd., Dexter, Mich. 48130. Ph. (313)426-4008 Monday thru Friday, 11 a.m. - 5 p.m.. Evenings after 6, 426-8251

Race Starts At 9:00 a.m.

UNADILLA STORE AND DELI SINCE 1873

OLDEST STORE IN LIVINGSTON COUNTY IN OF DOWNTOWN UNADILLA

OPEN ALL YEAR - 7 DAYS 498-2400

WE HAVE GROCERIES - BEER - WINE - LIQUOR - ICE CREAM - WOOD - FISHING NEEDS - GAS - OIL - A LITTLE OF EVERYTHING

DELI IS OPEN

RENIE'S BACK - HOME-MADE PIZZAS ALWAYS-BIG SUBS, BREAD STICKS, PIZZA SLICES SMALL STUFFED PIZZAS

DELI HOURS ARE FRI. & SAT., FROM 5 P.M. TILL CLOSING REGULAR CHOCOLATE, SALAD & VEGETARIAN PIZZAS

OUR ICE CREAM PARLOR IS OPEN

REAL ICE CREAM - NEW HOME-MADE WAFFLE CONES HOT FUDGE SUNDAES (you can eat dish and all)

16 FLAVORS OF ICE CREAM & PENNY CANDY

BETTY LYTTLE, Owner

Extension Homemakers Planning Spring Rally

Washtenaw County Extension Homemakers will hold a Spring Rally at the United Methodist Church, Saline, Tuesday, May 5. The evening will begin with a buffet dinner served at 6 p.m., followed by a slide presentation on Historic Washtenaw County given by Judge Russ Campbell. A display of Cultural Arts and Crafts made by extension members during the past year will be shown and ribbons awarded during the evening. Anyone interested in attending the event is invited to join the group. For further details, please contact Joanne Fredal, president of the Washtenaw Extension Homemakers Council. To make a reservation at \$5.25 per person, call Joanne at 482-0010.

The group held their annual Food and People lesson, Feb. 24, at the Co-operative Extension Service Center. This year's lesson on the foods and people of Scandinavia was presented by the Lima Extension Study Group.

Extension Homemakers study groups have participated in this project as far back as 1966. Michigan Association of Extension Homemakers (MAEH), was organized in 1936 by joining the National Extension Homemakers Association. MAEH is also associated with Country Women's Council and the Associated Country Women of the World. As members of an international group, Extension Homemakers have been interested in learning about the culture of people in other countries. The annual Food and People lesson provided the group with an enjoyable means of

education about the other countries.

Lima Extension Study Group is one of the first study groups to be founded in Washtenaw county under the leadership of Harold S. Oster, county agent during 1923-24.

During the war years, members made mattresses for use by the needy from surplus cotton.

Because of the number of members (41), the group meets at the Lima Township Hall. Realizing it needed repair, they decided to push for a change. In addition to cleaning and painting, the group bought and hung new draperies, purchased new shades and had a new floor installed. New lighting was added and an electric clock also installed. In addition, tableware and miscellaneous kitchen utensils were purchased. The township board provided new chairs and tables and a ramp to the front door of the building.

During the nation's Bicentennial Year, Lima Extension Study Group made a wall-hanging for the town hall, representing the land-holders and their properties in each of the township sections.

Each 12-inch square of cloth was embroidered to present the section like a map, Indian trails, roads, railroads, expressways, rivers and streams, private or commercial property, town or rural areas were all identified on the hanging.

The 36 squares showing the historic information were put together to form a map of the entire township.

Township Supervisor Wallace (Continued on page 18)



ESSAY WINNERS in the 27th annual Americanism Essay Contest, sponsored by the Farm Bureau Insurance Group, are, from left, Charity Strong, daughter of Robert and Ellen Strong, 1804 Jerusalem Rd., who took first place; Melissa Johnson, daughter of Will and Gale Johnson, 770 Book St., who finished second; and Barbara Scriven, daughter of Valerie and David Scriven, 15205 Elder Rd., who placed third.

Three Beach School Students Win in Americanism Essay Contest

Three students from Beach Middle School in Chelsea have been named local winners in the 27th annual Americanism Essay Contest, sponsored by Farm Bureau Insurance Group.

The three students, who earned the first-, second- and third-place awards from their school, are Charity Strong, first; Melissa Anne Johnson, second; and Barbara Scriven, third. All three received award certificates for their achievement. As the school's first-place winner, Charity Strong's name will also be engraved on a plaque for permanent display in the school.

Charity's first-place essay now advances to the state level competition, from which the top 10 essays in Michigan will be selected. The top 10 state-wide winners, who will be announced in May, will receive plaques and U.S. savings bonds ranging in value from \$50 to \$1,000. In addition, the top 10 essays will be

displayed at a banquet in Lansing and at a meeting with Michigan's top governmental leaders.

A team of finalist judges that includes Gov. James Blanchard and Lt. Gov. Martha Griffiths will determine the top state-wide winners.

Several thousand eighth grade students from 500 Michigan schools participated in the 1985-86 Americanism Essay Contest.

which was conducted with the help of Farm Bureau Insurance agents across the state. The topic of the 1985-86 contest was "Why I Am Proud to be an American."

Started in 1968 and open to all Michigan eighth grade students, the contest encourages Michigan youngsters to explore their roles in America's future.

Substance Abuse Task Force Offers Study on Cocaine

Cocaine. What is it? What can it do? These are some of the questions to be addressed in a special program sponsored by the Chelsea Substance Abuse Task Force. In a recent study, a good portion of students reported that they knew how to obtain it.

The presentation will be on Monday evening, April 28 at 7 p.m. in the living room of Kresge House. The evening will start with a showing of the film, "Cocaine Through the Looking Glass." This will be followed by a panel discussion. The panel will consist of Dr. John Severin, a doctor in the Substance Abuse unit at Chelsea Community Hospital; Ed Humenay, a therapist in that program, as well as some people who are currently in a recovery program. It promises to be an informative and timely presentation.

Another special evening will take place the night of June 9. Deputy John Hittler of the Washtenaw County Sheriff's Department will do a presentation on Drinking and Driving. The focus of the topic are the legalities involved in hosting parties or conducting a business where alcohol is consumed. It was thought that this topic would be especially useful around the time of high school proms and graduation.

These presentations are free and open to the public.

Recently, the Task Force elected a new slate of officers. The president is Ms. Anne Williams, a resident of Chelsea; vice-president is Thomas Haight, a representative of the Kresge Alumni; Joseph Redding of the Chelsea School Board, treasurer; and Dennis Petsch, a teacher and a representative of the Chelsea Police Force, secretary.

Further information regarding the Task Force or the educational programs may be obtained by calling Chelsea Hospital at 475-1311, ext. 215 (Substance Abuse Department).

Van . . .

(Continued from page nine) experiences through the use of the van.

Purchase of the van was made possible by funds raised at the Autumn Celebration Fall Benefit, and with donations from the Hospital Board of Trustees and the Hospital Department Heads.

MICHAEL W. BUSH

C.P.A., P.C.
CERTIFIED PUBLIC ACCOUNTANT
6790 Dexter Road, Dexter
Ph. 426-5556
Accounting, Tax & Consulting Services
Personal, Business, Firm, Corporate
Monday-Friday 9 a.m. to 5 p.m.
Evening & Weekend appointments available

Signs of Spring Walk Stated Saturday

"Signs of Spring," will be the subject of an interpretive stroll through the Waterloo Recreation Area this Saturday.

Participants should meet at the nature center parking lot. Vehicle permit is required.

Krys Haapala leads the walk, beginning at 1:30 p.m., to hear the resounding spring peepers and chorus frogs, see the beautiful hepatica, and smell the memorable stink cabbage.



"GET READY FOR SPRING"

KLINK EXCAVATING

TOP SOIL SAND PROCESSED ROAD GRAVEL ASPHALT DRIVES

ALL TYPES OF STONES

475-7631

FEED

FOR PROFIT

See us for feed needs!

Feed Formulas Tested, Proved To Get Results

Extra proteins, vitamins and minerals in proper balance, scientifically blended, make our feeds real profit producers for you.

Farmers' Supply Co.

Phone 475-1777

Chelsea Welding, Inc.

- INDUSTRIAL FABRICATIONS
- PORTABLE WELDING
- TRAILER HITCHES

Farm Machine Repairs

No Job Too Small

1190 Plaza Rd., Chelsea
6-26 AM, 6-12 PM

475-2121

NAPA Champion spark plugs free

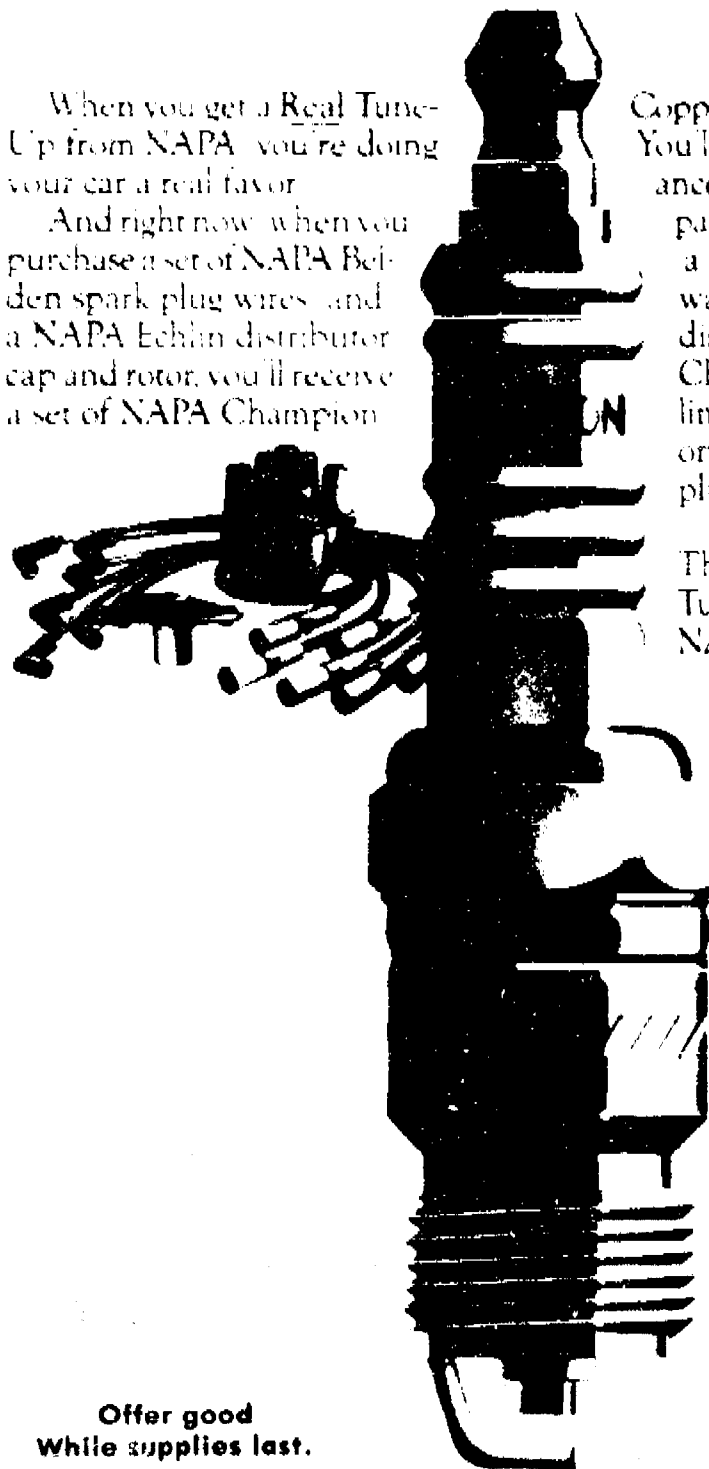
with a Real Tune-Up from NAPA.

When you get a Real Tune-Up from NAPA, you're doing your car a real favor.

And right now when you purchase a set of NAPA Belden spark plug wires and a NAPA Echlin distributor cap and rotor, you'll receive a set of NAPA Champion

Copper Plus Spark Plugs, free! You'll enjoy better performance and mileage. And all parts are fully covered with a 6 month/6,000 mile warranty on the Echlin distributor cap, rotor and Champion plugs, plus a limited lifetime warranty on NAPA Belden spark plug wires.

Do your car a favor. This time make it a Real Tune-Up and save at NAPA, now.



Offer good while supplies last.

AC PLUGS may be substituted at purchaser's option

RICHARDSON AUTOMOTIVE SUPPLY

DALE RICHARDSON
405 N. Main St., Chelsea

Phone 475-9141

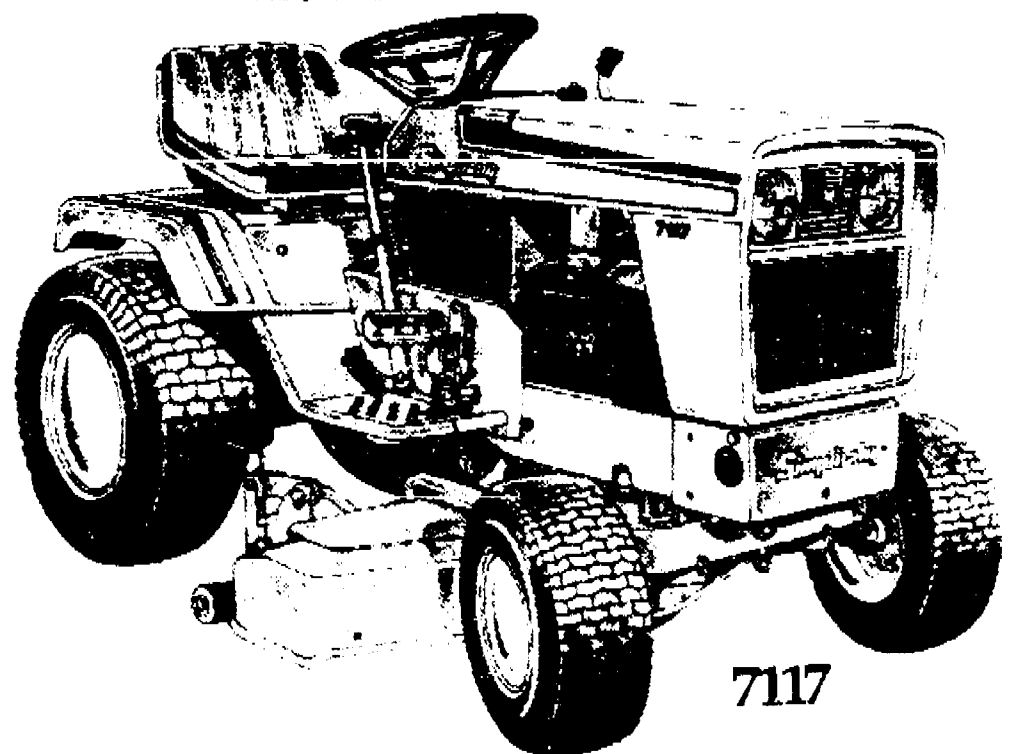


All the right parts in all the right places.

© 1985 National Automotive Parts Association

Simplicity

Our sale price makes this the best garden tractor in the lawn run.



The Simplicity Model 7117 Garden Tractor is built to get you through season after season of the toughest jobs. While its sale price goes easy on your budget.

The 7117 makes a 48" wide cut. Powered by a 17 HP twin-cylinder engine, it has automatic transmission, single-lever infinite speed control and controlled traction differential. With so many tough, long-lasting features, the only short cut in this sale-priced tractor shows up on the price tag.

Model 7117 Garden Tractor

Sale Price \$4,799

Save \$1,000

TRADE-INS WELCOME

FINANCING AVAILABLE

Note: Sale ends May 1, 1986. Existing stock only.

CHELSEA HARDWARE

GARDEN 'N' SAW ANNEX

120 S. Main St., Chelsea

Ph. 475-1121

LITTLE WANT ADS! BIG PLUSES FOR BIG RESULTS!

Washtenaw County's Busy Marketplace . . . Quick, Economical Results . . . Give 'em a try!

Help Wanted

POLICE OFFICER
Part-time
MUST BE MLEOTC CERTIFIED
Experience preferred
Send application resume to
UNADILLA TOWNSHIP POLICE
P.O. Box 120
Gregory, MI 48137

WITNESSES WANTED at Country Restaurant, Main St., Dexter. Apply in person.
AGENTS looking for people to work in TV commercials. For info, call (616) 807-3401 Ext. 1710.
CASHIER-CLERK Mature, responsible person for full-time position. Student Bike Shop, 607 S. Main, Ann Arbor. 662-4788. x446

HELP WANTED
LIDWING for challenging, responsible position working with the public? Good pay benefits, opportunity for advancement, apply at Pump N' Pantry, 55 Fletcher Rd., Chelsea, or 2841 S. State, Ann Arbor. x47-2

Sales Representative
Demonstrate high quality educational toys, books and games for
DISCOVERY TOY
part-time, full-time
Flexible Hours
Call 761-6441

EXCELLENT TYPIST — For 2½ days per week. Podiatrist's office. Please phone 475-1200. x47

Cheker Oil Company
Now accepting applications for full-time assistant manager and cashiers.
Apply at
930 South Main St.
Chelsea
Between 8 a.m. to 1 p.m.
E.O.E.

CERTIFIED UMPIRE — Experienced. preferred. Anyone interested please call Mary Gahan at 475-7881. x47

LOCAL based Michigan corporation expanding in Ann Arbor area. Women and men needed for opening positions. Must be able to accept moderate employment. Salaried. Call 996-8400. x47

Full-Time Parts Person
at Dealer Store. Apply in person.

Parts Peddler
Auto Supply Store
2888 Baker Rd., Dexter

If You Need Work Come to Kelly Services
We'll keep you busy!
• Work for the Best Companies
• Earn Top Pay
• Flexible Hours
• Vacation Pay
IMMEDIATE OPENINGS
For the following
Experienced Clerical Skills:
• Word Processing Operators
• Secretaries
• Typists
• Receptionists
• Switchboard Operators
• Data Entry Operators
• Accounting Clerks
• 10 Key Calculator General Clerk
Call for Appointment
Between 9 a.m. - 3 p.m., M-F

Kelly Services
Williamsburg Square II
475 Market Place, Suite F
Ann Arbor, Michigan 48104
Telephone (313) 761-5700
BOE Not an agency. Never a fee. M/F/H

Wanted to Rent
SINGLE PARENT with children and pets looking to rent old farm house in Chelsea School District. Also open to home sharing with another woman with or without children. Leave message for Debbie at 663-7439. x47-2

Wanted to Rent
SINGLE PARENT with children and pets looking to rent old farm house in Chelsea School District. Also open to home sharing with another woman with or without children. Leave message for Debbie at 663-7439. x47-2

Wanted to Rent
SINGLE PARENT with children and pets looking to rent old farm house in Chelsea School District. Also open to home sharing with another woman with or without children. Leave message for Debbie at 663-7439. x47-2

Wanted to Rent
SINGLE PARENT with children and pets looking to rent old farm house in Chelsea School District. Also open to home sharing with another woman with or without children. Leave message for Debbie at 663-7439. x47-2

Wanted to Rent
SINGLE PARENT with children and pets looking to rent old farm house in Chelsea School District. Also open to home sharing with another woman with or without children. Leave message for Debbie at 663-7439. x47-2

Wanted to Rent
SINGLE PARENT with children and pets looking to rent old farm house in Chelsea School District. Also open to home sharing with another woman with or without children. Leave message for Debbie at 663-7439. x47-2

Wanted to Rent
SINGLE PARENT with children and pets looking to rent old farm house in Chelsea School District. Also open to home sharing with another woman with or without children. Leave message for Debbie at 663-7439. x47-2

Wanted to Rent
SINGLE PARENT with children and pets looking to rent old farm house in Chelsea School District. Also open to home sharing with another woman with or without children. Leave message for Debbie at 663-7439. x47-2

Wanted to Rent
SINGLE PARENT with children and pets looking to rent old farm house in Chelsea School District. Also open to home sharing with another woman with or without children. Leave message for Debbie at 663-7439. x47-2

Wanted to Rent
SINGLE PARENT with children and pets looking to rent old farm house in Chelsea School District. Also open to home sharing with another woman with or without children. Leave message for Debbie at 663-7439. x47-2

Wanted to Rent
SINGLE PARENT with children and pets looking to rent old farm house in Chelsea School District. Also open to home sharing with another woman with or without children. Leave message for Debbie at 663-7439. x47-2

Wanted to Rent
SINGLE PARENT with children and pets looking to rent old farm house in Chelsea School District. Also open to home sharing with another woman with or without children. Leave message for Debbie at 663-7439. x47-2

Wanted to Rent
SINGLE PARENT with children and pets looking to rent old farm house in Chelsea School District. Also open to home sharing with another woman with or without children. Leave message for Debbie at 663-7439. x47-2

Wanted to Rent
SINGLE PARENT with children and pets looking to rent old farm house in Chelsea School District. Also open to home sharing with another woman with or without children. Leave message for Debbie at 663-7439. x47-2

Wanted to Rent
SINGLE PARENT with children and pets looking to rent old farm house in Chelsea School District. Also open to home sharing with another woman with or without children. Leave message for Debbie at 663-7439. x47-2

Wanted to Rent
SINGLE PARENT with children and pets looking to rent old farm house in Chelsea School District. Also open to home sharing with another woman with or without children. Leave message for Debbie at 663-7439. x47-2

Wanted to Rent
SINGLE PARENT with children and pets looking to rent old farm house in Chelsea School District. Also open to home sharing with another woman with or without children. Leave message for Debbie at 663-7439. x47-2

Work Wanted

HOUSECLEANINGS Call Sheila 428-9228. x48-6
DEPENDABLE high school student looking for lawn job, preferably north side of Chelsea. Ph. 475-9556 evenings. x48-2

Vote for Rochelle
She believes in the kids, and quality education too.
The school board election is June 9th you know.
and it's important to vote to please do

Child Care
Paid for by the: Rochelle Martinez. Moulleaux for School Board. x47
GARDEN PLUMBING — Phone evenings. 475-3209. x48-2

Child Care
Paid for by the: Rochelle Martinez. Moulleaux for School Board. x47
GARDEN PLUMBING — Phone evenings. 475-3209. x48-2

Child Care
Paid for by the: Rochelle Martinez. Moulleaux for School Board. x47
GARDEN PLUMBING — Phone evenings. 475-3209. x48-2

Child Care
Paid for by the: Rochelle Martinez. Moulleaux for School Board. x47
GARDEN PLUMBING — Phone evenings. 475-3209. x48-2

Child Care
Paid for by the: Rochelle Martinez. Moulleaux for School Board. x47
GARDEN PLUMBING — Phone evenings. 475-3209. x48-2

Child Care
Paid for by the: Rochelle Martinez. Moulleaux for School Board. x47
GARDEN PLUMBING — Phone evenings. 475-3209. x48-2

Child Care
Paid for by the: Rochelle Martinez. Moulleaux for School Board. x47
GARDEN PLUMBING — Phone evenings. 475-3209. x48-2

Child Care
Paid for by the: Rochelle Martinez. Moulleaux for School Board. x47
GARDEN PLUMBING — Phone evenings. 475-3209. x48-2

Child Care
Paid for by the: Rochelle Martinez. Moulleaux for School Board. x47
GARDEN PLUMBING — Phone evenings. 475-3209. x48-2

Child Care
Paid for by the: Rochelle Martinez. Moulleaux for School Board. x47
GARDEN PLUMBING — Phone evenings. 475-3209. x48-2

Child Care
Paid for by the: Rochelle Martinez. Moulleaux for School Board. x47
GARDEN PLUMBING — Phone evenings. 475-3209. x48-2

Child Care
Paid for by the: Rochelle Martinez. Moulleaux for School Board. x47
GARDEN PLUMBING — Phone evenings. 475-3209. x48-2

Child Care
Paid for by the: Rochelle Martinez. Moulleaux for School Board. x47
GARDEN PLUMBING — Phone evenings. 475-3209. x48-2

Child Care
Paid for by the: Rochelle Martinez. Moulleaux for School Board. x47
GARDEN PLUMBING — Phone evenings. 475-3209. x48-2

Child Care
Paid for by the: Rochelle Martinez. Moulleaux for School Board. x47
GARDEN PLUMBING — Phone evenings. 475-3209. x48-2

Child Care
Paid for by the: Rochelle Martinez. Moulleaux for School Board. x47
GARDEN PLUMBING — Phone evenings. 475-3209. x48-2

Child Care
Paid for by the: Rochelle Martinez. Moulleaux for School Board. x47
GARDEN PLUMBING — Phone evenings. 475-3209. x48-2

Child Care
Paid for by the: Rochelle Martinez. Moulleaux for School Board. x47
GARDEN PLUMBING — Phone evenings. 475-3209. x48-2

Child Care
Paid for by the: Rochelle Martinez. Moulleaux for School Board. x47
GARDEN PLUMBING — Phone evenings. 475-3209. x48-2

Child Care
Paid for by the: Rochelle Martinez. Moulleaux for School Board. x47
GARDEN PLUMBING — Phone evenings. 475-3209. x48-2

Child Care
Paid for by the: Rochelle Martinez. Moulleaux for School Board. x47
GARDEN PLUMBING — Phone evenings. 475-3209. x48-2

Child Care
Paid for by the: Rochelle Martinez. Moulleaux for School Board. x47
GARDEN PLUMBING — Phone evenings. 475-3209. x48-2

Child Care
Paid for by the: Rochelle Martinez. Moulleaux for School Board. x47
GARDEN PLUMBING — Phone evenings. 475-3209. x48-2

Child Care
Paid for by the: Rochelle Martinez. Moulleaux for School Board. x47
GARDEN PLUMBING — Phone evenings. 475-3209. x48-2

Child Care
Paid for by the: Rochelle Martinez. Moulleaux for School Board. x47
GARDEN PLUMBING — Phone evenings. 475-3209. x48-2

Child Care
Paid for by the: Rochelle Martinez. Moulleaux for School Board. x47
GARDEN PLUMBING — Phone evenings. 475-3209. x48-2

Child Care
Paid for by the: Rochelle Martinez. Moulleaux for School Board. x47
GARDEN PLUMBING — Phone evenings. 475-3209. x48-2

Wanted to Rent

CHELSEA BUSINESSMAN and family need home or apartment to rent while building. 475-1222. x47
BUSINESS OWNER and family need home to rent. May 23 through Sept. 1 while building home. Please call 434-0901 collect. x48-5

For Rent
EXTRA NICE quiet 3-room upper. Mature lady. Garage. 475-7688. x48-3

LAND FOR RENT 54 acres. Ph. 475-8446 or 475-4461. x47-4
CAR RENTAL by the day, week-end or month. Full insurance coverage, low rates. Call Lyle Chevrolet at Palmer Motor Sales. 475-1301. x48-3

FOR RENT — Fair Service Center for meetings, parties, wedding receptions, etc. Weddings or receptions. Contact Mark Stephan, phone 428-3529. x48-2

2-BEDROOM DUPLEX with basement, fenced yard, in village. \$875/mo. 475-7714. x47

MISS NEEDED
SUPER HOUSECLEANING — Mean houses \$30 a visit. References. Call 475-3225 for an estimate. x48-2

Do You Have Pimples?
Earn \$75
Volunteers with moderately severe acne (15 blackheads and/or 10 pimples or more) ages 12-25, need to research acne treatments. Only 5 visits over a 12-week period.

Call University of Michigan Dept. of Dermatology, 938-6390 M-F, 9 a.m. - 4 p.m. for appointments. x48-4

PRAYER TO ST. JUDE — Oh Holy St. Jude, Agapote and Martyr, great in virtue and rich in miracles, dear kinsman of Jesus Christ, faithful intercessor of all who invoke your special patronage in time of need to you, I have recourse from the depths of my heart and humbly beg you to whom God hath given such great power to come to my assistance. Help me in my present and urgent position. In return, I promise to make your name known and cause it to be invoked. Say three Our Fathers, three Hail Marys and three Glorias for nine consecutive days. Public recognition must be promised. St. Jude, pray for us and all who invoke your aid. AMEN. (This novena has never been known to fail.) J.C.M.D. x47

Wanted to Rent
SINGLE PARENT with children and pets looking to rent old farm house in Chelsea School District. Also open to home sharing with another woman with or without children. Leave message for Debbie at 663-7439. x47-2

Wanted to Rent
SINGLE PARENT with children and pets looking to rent old farm house in Chelsea School District. Also open to home sharing with another woman with or without children. Leave message for Debbie at 663-7439. x47-2

Wanted to Rent
SINGLE PARENT with children and pets looking to rent old farm house in Chelsea School District. Also open to home sharing with another woman with or without children. Leave message for Debbie at 663-7439. x47-2

Wanted to Rent
SINGLE PARENT with children and pets looking to rent old farm house in Chelsea School District. Also open to home sharing with another woman with or without children. Leave message for Debbie at 663-7439. x47-2

Wanted to Rent
SINGLE PARENT with children and pets looking to rent old farm house in Chelsea School District. Also open to home sharing with another woman with or without children. Leave message for Debbie at 663-7439. x47-2

Wanted to Rent
SINGLE PARENT with children and pets looking to rent old farm house in Chelsea School District. Also open to home sharing with another woman with or without children. Leave message for Debbie at 663-7439. x47-2

Wanted to Rent
SINGLE PARENT with children and pets looking to rent old farm house in Chelsea School District. Also open to home sharing with another woman with or without children. Leave message for Debbie at 663-7439. x47-2

Wanted to Rent
SINGLE PARENT with children and pets looking to rent old farm house in Chelsea School District. Also open to home sharing with another woman with or without children. Leave message for Debbie at 663-7439. x47-2

Wanted to Rent
SINGLE PARENT with children and pets looking to rent old farm house in Chelsea School District. Also open to home sharing with another woman with or without children. Leave message for Debbie at 663-7439. x47-2

Wanted to Rent
SINGLE PARENT with children and pets looking to rent old farm house in Chelsea School District. Also open to home sharing with another woman with or without children. Leave message for Debbie at 663-7439. x47-2

Wanted to Rent
SINGLE PARENT with children and pets looking to rent old farm house in Chelsea School District. Also open to home sharing with another woman with or without children. Leave message for Debbie at 663-7439. x47-2

Wanted to Rent
SINGLE PARENT with children and pets looking to rent old farm house in Chelsea School District. Also open to home sharing with another woman with or without children. Leave message for Debbie at 663-7439. x47-2

Wanted to Rent
SINGLE PARENT with children and pets looking to rent old farm house in Chelsea School District. Also open to home sharing with another woman with or without children. Leave message for Debbie at 663-7439. x47-2

Wanted to Rent
SINGLE PARENT with children and pets looking to rent old farm house in Chelsea School District. Also open to home sharing with another woman with or without children. Leave message for Debbie at 663-7439. x47-2

Wanted to Rent
SINGLE PARENT with children and pets looking to rent old farm house in Chelsea School District. Also open to home sharing with another woman with or without children. Leave message for Debbie at 663-7439. x47-2

Wanted to Rent
SINGLE PARENT with children and pets looking to rent old farm house in Chelsea School District. Also open to home sharing with another woman with or without children. Leave message for Debbie at 663-7439. x47-2

Wanted to Rent
SINGLE PARENT with children and pets looking to rent old farm house in Chelsea School District. Also open to home sharing with another woman with or without children. Leave message for Debbie at 663-7439. x47-2

Wanted to Rent
SINGLE PARENT with children and pets looking to rent old farm house in Chelsea School District. Also open to home sharing with another woman with or without children. Leave message for Debbie at 663-7439. x47-2

Wanted to Rent
SINGLE PARENT with children and pets looking to rent old farm house in Chelsea School District. Also open to home sharing with another woman with or without children. Leave message for Debbie at 663-7439. x47-2

Wanted to Rent
SINGLE PARENT with children and pets looking to rent old farm house in Chelsea School District. Also open to home sharing with another woman with or without children. Leave message for Debbie at 663-7439. x47-2

Wanted to Rent
SINGLE PARENT with children and pets looking to rent old farm house in Chelsea School District. Also open to home sharing with another woman with or without children. Leave message for Debbie at 663-7439. x47-2

Bus. Services

We Offer Sales & Service
RCA - ZENITH - Philco - Quasar - Sony B & W and Color TVs
NuTone - Choralmaster
Wingard - Cobra CB Radios
Master Antenna Specialists
Antenna Rotor Insurance Job
Commercial, Residential
Paging Intercom Systems
NuTone Parts and Service Center
Heaver Vacuum Dealers
and Service Specialists
Keys by Curtis
We service other leading brands
Senior Citizens 10% Discount.

LOY'S TV CENTER
512 N. Maple Rd., Ann Arbor
768-0198
Master Charge, Visa Welcome. x37H

PLUMBING AND REPAIR — Quality Rad technicians. Call Ron Harris, 475-7134. x22H
PAINTING — Interior and exterior. Experienced. Ph. (517) 322-3698. x48

ROOFING, SIDING, REMODELING — Kitchen. Jim Hughes. 475-2079 or 475-2282. x52-11

DAVE'S SIDING & ROOFING
Aluminum and vinyl siding. Custom trim and gutters. 1-(517)-831-7740. x48H

R. L. BAUER Builders
LICENSED and INSURED
Custom Building
Houses - Garages - Pole Barns
Roofing - Siding - Concrete Work
FREE ESTIMATES
Call 475-1218 x7H

RON MONTANGE CONSTRUCTION
Full carpentry services (rough and finish)
Additions, remodeling and repairs
Replacement Windows
Concrete
Roofing and siding
Caulking and Fence work
Excavating and Trenching
QUALITY WORKMANSHIP
FREE ESTIMATES
475-1080
LICENSED x19H

Custom Pole Buildings
SPECIALIZING in all-wood Pole Buildings, any type or size desired. The shingle roof and rough-sawn siding will conform to your house better than painted steel and last longer for approx. the same price. Also wood decks and porches.

John Bowdish
(517) 851-8223 days
Excavating
SAND GRAVEL
KLINK EXCAVATING
Bulldozer - Backhoe
Road Work - Basements
Trucking - Crane Work
Top Soil - Demolition
Drainfield - Septic Tank
Trenching - 5 up
Industrial - Residential - Commercial
CALL 475-7631 x13H

LITTLE WACK EXCAVATING — Licensed & Insured. Basements, Drainfields, Digging, Bulldozing, Trenching, Block Dirt, Sand, Gravel. Paul Wackenhut. (313) 428-8025. x23H

THANK YOU
On behalf of the Beach School students who participated in the Jump Rope for Heart. I want to thank the Chelsea community for responding so generously. Because of your contributions \$3,161.92 was donated to the American Heart Association for research and educational programs in heart disease, America's number one cause of death.

I also want to thank The Chelsea Standard for their fine coverage of this event which showed our students with hearts beat stronger because of the physical exercise and warmer because of service to our fellow man.

Ann Schaffner, Event Co-Ordinator.
Subscribe today to The Standard

THANK YOU
A special "Thank You" to all who helped me during my stay in Chelsea Hospital and since my return home. Thank you to those people who furnished food, transportation, visits, cards, and telephone calls. It was all appreciated very much.
Nancy Lehmann.

Memoriam
IN MEMORIAM
In loving memory of Katherine Cavender, our beloved wife, mother and grandmother who passed away three years ago, April 26. Even though we have loving memories of you as the days pass, our hearts still ache as these are kept for you. The love that's in our hearts and the memories of you will be forever. But you are still very sadly missed by your loving family.
Husband, Owen P. Cavender
Daughters, Barb & Alice Cavender
Son & Daughter-in-law, Spark & Nina Cavender
Daughter & Son-in-law, Kathy & Ken Bartokale
Granddaughter, Michelle Bartokale.

CHelsea Hardware
110 S. Main Ph. 475-1121
x30H
Serving the community since 1907.
FULL-SERVICE TUTORING — All subjects, all grades. Jacquelyn Bailey. 475-3325. x48-2

OWN YOUR OWN Jean-Sportswear
Ladies Apparel, children's, large sizes, combination store, pattern, maternity, dancewear, accessories. Jordache, Chic Lee, Levi, Jod, Givano, Tommy, Calvin Klein, Sergio Valente, Even Piconic, Liz Claiborne. Members Only, Gasoline, HealthWear, over 1,000 others. \$13,300 to \$24,900 inventory, training, fixtures, grand opening, etc. Can open 15 days. Mr. Loughlin (612) 888-6555. x47

CARD OF THANKS
Mr. and Mrs. Walter
Mr. and Mrs. Cobb
Mr. Clark
Mr. Tobin
Thank you for all the time and effort you spend on us. We appreciate you giving up your precious vacation to take us to Gatlinburg, Tennessee.
Chelsea Varsity Softball
Chelsea Junior Varsity Softball Teams

THANK YOU
On behalf of the Beach School students who participated in the Jump Rope for Heart. I want to thank the Chelsea community for responding so generously. Because of your contributions \$3,161.92 was donated to the American Heart Association for research and educational programs in heart disease, America's number one cause of death.

I also want to thank The Chelsea Standard for their fine coverage of this event which showed our students with hearts beat stronger because of the physical exercise and warmer because of service to our fellow man.

Ann Schaffner, Event Co-Ordinator.
Subscribe today to The Standard

THANK YOU
A special "Thank You" to all who helped me during my stay in Chelsea Hospital and since my return home. Thank you to those people who furnished food, transportation, visits, cards, and telephone calls. It was all appreciated very much.
Nancy Lehmann.

Memoriam
IN MEMORIAM
In loving memory of Katherine Cavender, our beloved wife, mother and grandmother who passed away three years ago, April 26. Even though we have loving memories of you as the days pass, our hearts still ache as these are kept for you. The love that's in our hearts and the memories of you will be forever. But you are still very sadly missed by your loving family.
Husband, Owen P. Cavender
Daughters, Barb & Alice Cavender
Son & Daughter-in-law, Spark & Nina Cavender
Daughter & Son-in-law, Kathy & Ken Bartokale
Granddaughter, Michelle Bartokale.

CHelsea Hardware
110 S. Main Ph. 475-1121
x30H
Serving the community since 1907.
FULL-SERVICE TUTORING — All subjects, all grades. Jacquelyn Bailey. 475-3325. x48-2

OWN YOUR OWN Jean-Sportswear
Ladies Apparel, children's, large sizes, combination store, pattern, maternity, dancewear, accessories. Jordache, Chic Lee, Levi, Jod, Givano, Tommy, Calvin Klein, Sergio Valente, Even Piconic, Liz Claiborne. Members Only, Gasoline, HealthWear, over 1,000 others. \$13,300 to \$24,900 inventory, training, fixtures, grand opening, etc. Can open 15 days. Mr. Loughlin (612) 888-6555. x47

CARD OF THANKS
Mr. and Mrs. Walter
Mr. and Mrs. Cobb
Mr. Clark
Mr. Tobin
Thank you for all the time and effort you spend on us. We appreciate you giving up your precious vacation to take us to Gatlinburg, Tennessee.
Chelsea Varsity Softball
Chelsea Junior Varsity Softball Teams

THANK YOU
On behalf of the Beach School students who participated in the Jump Rope for Heart. I want to thank the Chelsea community for responding so generously. Because of your contributions \$3,161.92 was donated to the American Heart Association for research and educational programs in heart disease, America's number one cause of death.

I also want to thank The Chelsea Standard for their fine coverage of this event which showed our students with hearts beat stronger because of the physical exercise and warmer because of service to our fellow man.

Ann Schaffner, Event Co-Ordinator.
Subscribe today to The Standard

Bus. Services



SHERIFF SCHAHL FLIPPED PANCAKES and so did dozens of his staff during the Pancake Breakfast held Sunday, April 22, at Waukegan County Sheriff's Department headquarters in the County Service Center on Bagback Rd. A steady stream of hungry patrons piled plates full of tasty Bob Evans sausage and golden pancakes cooked up by Sheriff Ron Schahl and his crew. Assisting WCSO volunteer chefs at the breakfast were experienced advisors from the kitchens of Bob Evans. Proceeds from the event will be used to purchase protective helmets, gloves and other equipment needed by WCSO helicopter pilots, Sheriff Schahl explained.

Margaret Torongo Completes Catholic Course

Margaret Torongo of Chelsea was one of 53 persons to graduate recently from a newly devised program designed to form teachers of religious studies for the parishes in the Catholic Diocese of Lansing. The 15-week course was part of

a newly created Catechist Formation Program from the Office of Education of the diocese. The graduation exercises were held at Lansing Catholic Central High school and were conducted by Kenneth J. Powish, bishop of the 10-county diocese.

LUNCHEON SPECIAL
FOR MONTH OF APRIL
CROCK OF SOUP OR CHILI
& SALAD BAR - \$2.50
DAILY LUNCHEON SPECIAL
Food to take out for lunches

DINNER SPECIAL
Monday, April 28 - 4:30 - 6:00 PM
MONDAY THRU THURSDAY \$7.95 Special Price
FRIDAY \$8.95 Country Style \$10.95
SATURDAY Prime Rib (above coverage eat)

SUNDAY, APRIL 27 - 2 p.m. HIT
STEAK SPECIAL

TOP SPORTS EVENTS on BIG SCREEN TV
LIVE BAND FRIDAY & SATURDAY

CATERING - Wedding - Graduation - Business Meetings

WOLVERINE
Food & Spirits

W. Old US-12 & M-32
 Chelsea (313) 475-9014

Cub Scouts Discover Spring Magic

PACK 455

Den 1, Leader Sandy Barkman
 April has shown the boys in our den the Magic of Spring. We have been studying science and planted pumpkin seeds with the hope of bringing a pumpkin back next fall to carve. The Cubs traveled back in time as they visited the Natural History Museum and toured the Prehistoric life section. They traveled into the future as we visited the Michigan Space Center in Jackson.

At the April pack meeting Den 1 received nine silver arrows collectively as the Cubs completed 50 extra electives. To round out the theme of "The Magic of Spring," the entire pack enjoyed a Magic show brought by Daryl Hurst.

Den 2, Leader Debbie Kennedy

The Webelos have been practicing first aid and playing lots of games. The boys are working hard on their badges. This month David Inari earned his engineer badge, Jason Johnson earned his scientist badge, Ben Havens earned his naturalist badge, Mark Kommer earned his engineer badge, and Michael Kennedy earned his naturalist badge. Over the next month and a half the boys will be preparing for their graduation into Boy Scouts.

At our Thursday, May 15 pack meeting, Joe Rogers will present an educational program on the birds of Michigan. Joe is the president of Wildlife Recovery Association in Midland, an organization which rehabilitates injured and sick animals so that they may be released and survive in the wild. Joe has promised to bring four or five live birds for the program, probably hawks, owls, and maybe a vulture. He puts on quite an impressive show, so don't miss this one!

We will also be registering new boys who wish to join Cub Scouts at this meeting, so any first through fourth grade boys and family members may attend. The meeting starts at 7 p.m. sharp, at the South school gym, and is open to all South school boys and family members who want to find out what Cub Scouting is all about. By registering now instead of waiting until fall, the boys are eligible to attend the summer day camp in June.

Homemakers

Continued from page 13
 Further crafted a wooden frame display cabinet complete with a light which sets off the wall-hanging with an artistic dignity befitting its colorful grandeur. Members of the Luma Extension Study Group are justifiably proud of their Bicentennial piece.

Five members of the group have been Extension members for 50 years or more: Lois Bradbury, 58 years; Donna Bradbury, 54 years; Elsie Pettibone, 53 years; Evelyn Breuninger, 53 years; Merle Coy, 51 years.

Throughout their more than 50 years history, Luma Extension Study Group members have been active community supporters.

Subscribe to
 The Chelsea Standard!



SAYING GOODBYE to North school student teacher Scott Stoll are some of his third, fourth and fifth grade students. Scott taught physical education with Wayne Watson at both Chelsea High school and North school. In saying farewell, students made him honorary

TLC for Me Program Presented to Girl Scouts

Huron Valley Girl Scout Council, which serves the greater Ann Arbor area Girl Scouts, developed a program called TLC (for Me Tender, Loving Care) designed to help children feel more comfortable with safety procedures while at home alone and when traveling to and from school.

This program is recognized on the national level by Girl Scouts USA and has been adopted by councils around the nation as a safety training for Girl Scouts as well as for school children in grades 1 through 6.

The TLC program was presented to Chelsea Girl Scouts at North and South schools through Lee Tremper, Chelsea's troop services director and organized by Lou Ann Kapp, Brownie leader of Troop 381.

The girls learned valued safety procedures from Beauman Street Jaskot and police officer Richard Walter. Through discussions on personal safety, the officers talked with the girls concerning the Do's and Don'ts of emergency situations that could happen when the girls are alone, with

family or on their way to and from school or just find themselves in an unplanned situation while playing with friends.

Emergency nurses from Chelsea Hospital Jan VanBosch, Nancy Fielder and Liz Posner discussed emergency and simple first aid with the girls at North school. Jennifer LaRosa, RN, and her assistant, Kathy Sullivan, presented emergency situations and their care to South school Girl Scouts through a series of short skits followed with questions and answers.

Dietetic student Julie Scheier an intern with Chelsea Community Hospital, discussed nutrition with the girls through her character of Ebenezer Scrooge and his visitation by the "Ghost of the Basic Food." The girls delighted in their parts as noted effects during the skit and learned about good nutrition at the same time.

TLC for Me proved to be a great learning experience for the 88 girls involved.

Dave Rank Named Rod & Gun Secretary

At the April meeting of its board of directors, Dave Rank was elected secretary of the Chelsea Rod and Gun Club. He will complete the 1986 term of George Padgham who died on March 20 after 16 consecutive years as club secretary.

Dave Rank of 1650 Rank Rd., Grass Lake, was president of the Rod and Gun Club in 1983 and is a 1986 board member. He is direc-

tor of industrial relations for Addison Industries.

Like so many members of the club, he is an ardent hunter and fisherman as well as a golfer.

student of the week and presented him with two North school t-shirts, signed by the students themselves. Scott is from Soline and will be graduating from Eastern Michigan University.

Pinckney Man's Son Re-Enlists in Marines

Marine Sgt. Joseph D. Hardin, son of Lloyd Hardin of Pinckney, has re-enlisted for six years while serving with 2nd Marine Division, Camp Lejeune, N.C. A 1981 graduate of Southeast High school, Bradenton, Fla., he joined the marines in 1981.

At Herrick Memorial Hospital WE CARE

That is why we designed our cardiology services to meet YOUR needs.

WE OFFER

- Intensive Coronary Care Services with Qualified, Experienced R.N.'s
- Telemetry Monitoring
- Cardiac Rehabilitation in patient and out-patient
- Graded Exercise Testing (Stress Test)
- Thallium and MUGA Scans
- 2 D & 3 D Echocardiography
- Pacemaker Services
- Streptokinase
- Drug Therapy

Large in Scope & Service, People Sized To Serve You.

HERRICK MEMORIAL HOSPITAL

500 E. Pottawatomie St.
 Tecumseh, Michigan 49286
 423-2141

NOTICE TO CHELSEA VILLAGE RESIDENTS ANNUAL SPRING RUBBISH CLEANUP APRIL 28, 1986

The 1986 Annual Village Spring Residential Rubbish Cleanup will be held this year on April 28, 1986.

Village residents may place their rubbish on their lawn extension the Saturday and Sunday prior to the pickup date.

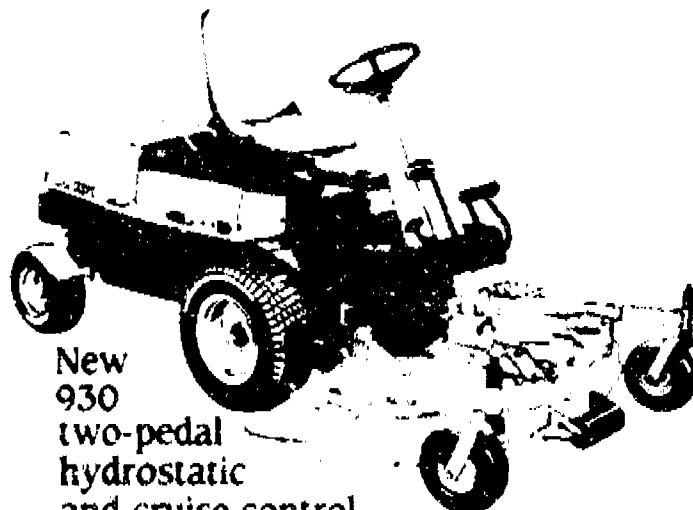
In an effort to speed up this year's annual cleanup, we are asking village residents to separate their rubbish and place it in separate piles in front of their homes in the following manner:

1. ALL METALS, INCLUDING APPLIANCES
2. ALL WOOD AND LUMBER MATERIALS
3. ALL SHRUB AND TREE TRIMMINGS
4. ANY ITEMS NOT INCLUDED IN THE ABOVE MUST BE PUT IN PLASTIC BAGS AND PLACED IN A FOURTH PILE

The purpose of this annual cleanup is to assist village residents in disposing of their household rubbish that accumulates during the year. Items that are normally too large in size or too much in quantity to be disposed of through the regular weekly collection service provided by the village. **VILLAGE CREWS WILL NOT PICK UP DEMOLITION MATERIALS SUCH AS BUILDINGS OR PARTS OF BUILDINGS, CONCRETE OR ASPHALT DRIVEWAYS AND SIDEWALKS.**

VILLAGE OF CHELSEA
 PUBLIC WORKS DEPARTMENT

Hands-free mowers. Hands-down winners.



New 930 two-pedal hydrostatic and cruise control add efficiency, reduce fatigue

Two-pedal hydrostatic drive lets you change speed and direction on the go. That and standard cruise control keep your hands free for steering and other operations... keep you productive with less fatigue. Also, unique mower deck weight transfer, true differential lock, dual cylinder implement hydraulics. Power steering, 24 hp, 2-cylinder gas engine. Call us for a demonstration.

Nothing Runs Like a Deere®



HURON FARM SUPPLY

426-8847 - 426-4086
 8250 Dexter-Chelsea Rd. Dexter



SHIVER RESTORATION

826 LOWERY ROAD, CHELSEA, MICHIGAN 48118
 313-475-7532

YOU ARE INVITED

SHIVER RESTORATION

THE COMPANY ENTRUSTED TO RECREATE THE ELEGANCE OF OUR BELOVED DEPUT

REQUESTS YOUR PRESENCE AT THE UNVEILING OF OUR LATEST RECREATION

THE UNION BUILDING
 110 W. CHICAGO BLVD
 TECUMSEH, MICHIGAN

THE CULMINATION OF YEARS OF EFFORT & PLANNING WILL BE REVEALED

Friday May 2nd 12th Noon

PLEASE PLAN ON JOINING US FOR THIS RARE OCCASION!

CHARLES

AREA DEATHS

Helen L. Paul

84 W. Middle St.
Chelsea
Helen L. Paul, 81, 806 W. Middle St., died Thursday, April 17 at the Chelsea United Methodist Retirement Home after a two-year illness.

She was born June 11, 1904 in Charleston, Ill., the daughter of Fred and Mable (Foreman) McMillan. On Jan. 1, 1930 she married Dr. L. J. Paul, and he preceded her in death on April 21, 1967.

Survivors include two daughters, Mrs. Fred (Mary) Harris and Mrs. Thomas (Cynthia) Bear, both of Chelsea; one sister, Mrs. Frances Moler, of Charleston; one brother, Samuel McMillan, of Charleston; four grandchildren, Shari Hader, of Haverhill, Ala., Rob Steier, of Chelsea, Kimble Bear, of Gregory, and Mark Bear, of Chelsea; two step-grandchildren, Charlotte Bentley of Chelsea, and Steven Harris, of Kentucky; and eight great-grandchildren. She was also preceded in death by her high sister, Margaret, in 1925, and a great-grandson, Eric Hader, on Feb. 24, 1976.

Mrs. Paul had resided in Chelsea since her marriage. She was a member of the First United Methodist church, and the Chelsea Senior Citizens group. She had also been an elementary school teacher.

Funeral services were held Monday, April 21 at the Cole-Burghardt Funeral Chapel, with the Rev. James Simmons of the Chelsea United Methodist Home officiating.

Memorial contributions may be made to the First United Methodist church of Chelsea.

Arrangements were handled by the Cole-Burghardt Funeral Chapel.

Eva V. Good

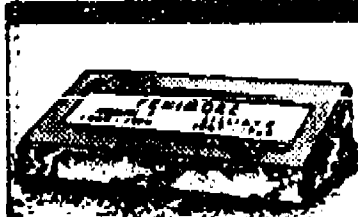
84 W. Middle St.
Chelsea
(Formerly of Royal Oak)

Mrs. Eva V. Crossley Good, 84, 84 W. Middle St., Chelsea, died Friday, April 18 at the Chelsea United Methodist Retirement Home. She was married to Vernon Good, who survives.

Other survivors include one son, Robert Crossley, of Haverhill, West Germany; one sister, Elsie Wilkinson, of Palm Harbor, Fla.; and several nieces and nephews.

Mrs. Good was a former resident of Boulevard Temple in Detroit prior to moving to Chelsea. She was retired from the Ford Motor Co. and was a member of the Metropolitan United Methodist Church of Detroit.

Funeral services will be held in Detroit tomorrow in Detroit. Burial will be in the Beechwood Cemetery Forest, Ontario, Can. Local arrangements were handled by Staffan-Mitchell Funeral Home.



Patten cemetery markers feature the same expert craftsmanship and superb granites found in family monuments. You are invited without obligation to have our trained counselor show you designs and samples to meet your cemetery requirements.

PATTEN MONUMENT

Represented by:
COLE-BURGHARDT FUNERAL CHAPEL
214 E. Middle, Chelsea
473-1331

Raymond Branson

Benton, Ark.
(Formerly of Chelsea)
Raymond H. Branson, age 67, of Route 3, Benton, Ark., died Friday, April 18 at Saline Memorial Hospital in Benton.

He was born in Livonia, the son of Edward and Ida Branson. He was a member of the King of Kings Lutheran church in Little Rock, Ark., and was a retired farmer and machinist from Dana Corp. in Chelsea. He was a former member and choir director of Faith Lutheran church in Dexter and resident of Chelsea.

Survivors include his widow, Susan; two sons, Carl and Duane, both of Houston, Tex.; two daughters, Mrs. James (Linda) Schlerendick of Milwaukee, Wis., and Mrs. John (Eather) Blumner of Sarasota, Fla.; a brother, Alvin Branson of Scottsdale, Ariz.; two sisters, Mrs. Edward (Wilma) Bonarrat of Seattle, Wash., and Mrs. Dennis (Alvina) Englehart of Chelsea; and 19 grandchildren.

Funeral services were held at King of Kings Lutheran church in Little Rock, Ark. at 11 a.m., Tuesday, April 22 with the Rev. David Pate officiating. Funeral arrangements were under the direction of the Aubrey Funeral Home of Benton, Ark. Burial was at Pine Crest Memorial Park in Benton, Ark.

Memorials may be made to the King of Kings Lutheran church in Little Rock.

Student Art Exposition Slated at Dexter Museum

Roberta Ruzarski and Jody Miller will chair the third Student Art Exposition sponsored by the Washtenaw-Livingston Education Association to be held at the Dexter Area Museum, from 1 until 4 p.m., April 24-25, and again during the same hours, May 3-4, as well as from 7 to 9 p.m. on April 28.

Art work which exemplifies the skills and media used by children in various age groups will be displayed at the special Student Art Exposition.

This will be the third WLEA-sponsored show to be held at the Dexter Area Museum. The show will feature work by students in

SCHOOL LUNCH MENU

Weeks of April 22-May 2

Wednesday, April 23—Sticky Joos on bun, later tots, vegetable sticks, applesauce, milk.

Thursday, April 24—Hot turkey sandwich with gravy, buttered corn, ice cream, milk.

Friday, April 25—Cheese and sausage pizza, tossed salad with dressing, fresh fruit, cookie, milk.

Monday, April 28—Lemonade, submarine sandwich, potato chips, dill pickles, pineapple tidbits, milk.

Tuesday, April 29—Couscous with cheese, buttered green beans, dinner roll and butter, molded fruit salad, milk.

Wednesday, April 30—Stark-Upton sandwich with cheese slice, french fries, baked beans, peach half, milk.

Thursday, May 1—Crispy fish fillet, oven-brown potatoes, cake slaw, baguette with butter, gnomes bar, milk.

Friday, May 2—Burrito with chili, hash brown patty, tossed salad with dressing, fresh fruit, milk.



A son, Joel McCalla, April 1, to Rod and Kathy Powers of 12801 Scio Church Rd., Chelsea. Maternal grandparents are Ralph and Elaine McCalla of Chelsea. Paternal grandparents are Charles and Martha Powers of Ann Arbor. Joel has two brothers, Joshua, 6, and Jared, 2, and a sister, Lindsay, 4.

Teen Parents Group To Discuss Current Problems

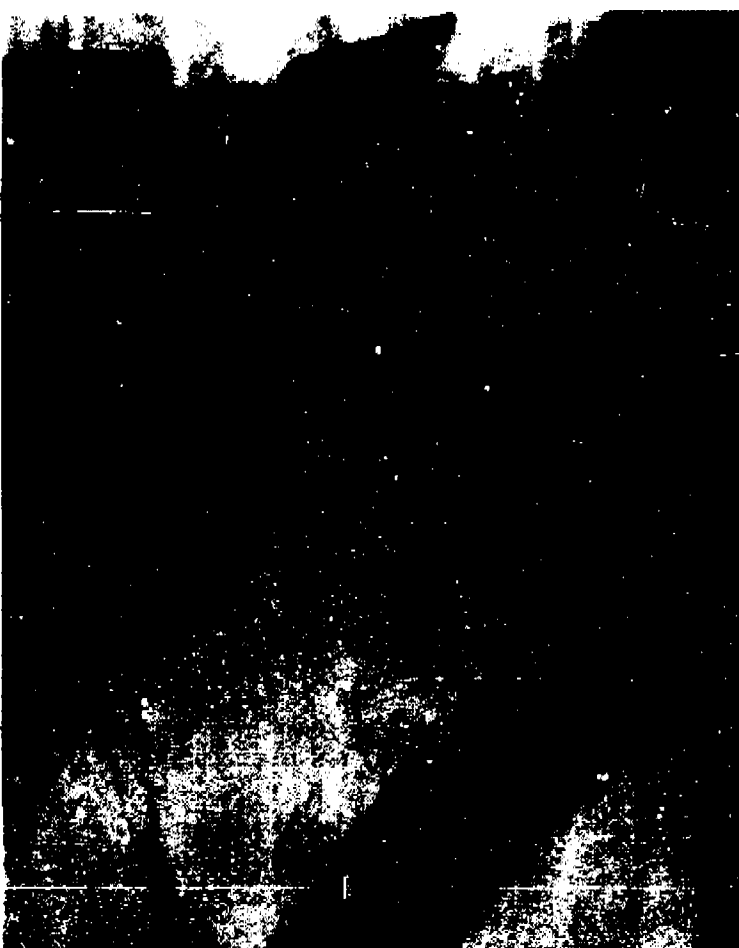
A group for teen-parents will begin on Friday, April 25 at 10 a.m. to 12 noon at Faith in Action on the Chelsea Medical Center grounds.

The purpose of this group is to develop parent-child interaction and discuss current problems facing teen parents of young children. There is no fee for this group and it is designed solely for the purpose of providing information on many different topics for teen parents.

Sponsored by Faith in Action, the group discussions will be led by Chandra Harris, RN, MSN, of the Family Practice Center and Kathy Thompson, BBA, of Faith in Action.

If you would like more information please call Kathy Thompson of Faith in Action, 475-3366, or Diane Parise of the Family Practice Center, 475-1321, ext. 430.

Please Notify Us
In Advance of
Any Change in Address



ALISON CHASTEN, a junior at Chelsea High school, was scheduled to tour Europe this summer with the Blue Lake International Orchestra. However, it was all cancelled due to concerns about international terrorism. She plays the bassoon.



KEEL GOURLEY, Chelsea High school band director, was scheduled to direct the Blue Lake International Band in Europe this summer. However, terrorist actions have called off the tour.

European Terrorism Causes Postponement Of Musical Exchange

Tensions between the United States and Libya have taken a small, but frustrating toll locally.

Chelsea High school band director William Gourley and junior Alison Chasten were supposed to take part in the prestigious 17th annual Blue Lake Fine Arts Camp International Exchange Program this summer.

Blue Lake is a fine arts camp and community school of the arts in Twin Lake.

The exchange program was to have taken them to West Germany, Belgium and the Netherlands this summer as part of two touring musical groups.

However, last week the tour was cancelled due to fears of terrorist reprisals.

Alison, a junior bassoon player, was due to be one of 200 American musicians in Blue Lake's 1986 International Orchestra, and perform a minimum of 18 concerts. Each member of the orchestra would have lived with nine or 10 host families during the 30 days of the tour.

"I was disappointed and kind of angry," Alison said. "I feel like it is giving in to terrorism. I didn't think it would affect me. We were going to relatively secure countries."

Alison's mother, Marilyn, said she was fully supportive of Alison making the trip despite the international scene, but admits, "I would have worried the whole time."

Alison said it was her understanding that Blue Lake officials had contacted the U.S. State Department for their advice before deciding to halt the trip. The department is apparently advising Americans to avoid overseas travel this summer.

Gourley had been chosen to conduct the International Band.

Rehearsals for the tour began last November and have continued monthly at Blue Lake Camp, near Muskegon. In May a full week-and-rehearsal was to be held at camp.

Chelsea Lions Club, Kiwanis Club of Chelsea, and Modern Mothers Study Club had given Chasten scholarships to help finance the trip. She was scheduled to report to each group, and play a bassoon solo, next fall.

In addition, Chasten had been working so many hours as she could at McDonald's to save for the trip.

"That's the disappointing part. I had finally gotten the money

together," she said.

There's a chance that Alison may be able to go next summer if the world situation improves. Blue Lake told Alison the tour was postponed for a year, rather than cancelled.

Alison is the daughter of Marilyn Chasten of Chelsea and Dr. Joseph Chasten of Denver.



KAREN LEE FUGENER, a former Chelsea resident, was awarded first place in the speech competition portion of the North Texas Miss American Co-ed contest held April 12-13 in Dallas. Karen, 18, is a senior at Plano East Senior High school in Plano, where she lives with her parents, Alan and Pat Fugener, and her sister, Kristin. Karen began her involvement in speech and drama while a student at Beach Middle school, and now competes state-wide with her high school's Speech and Drama team. "My Favorite American" was the title given to the competitors in the speech portion of the pageant. Karen received a prize of \$200 and a trophy.

1986 might mark the beginning of a career with the Blues, thanks to Sergeant Doroshov, a Soviet caviar expert who defected to the United States in 1977. With Doroshov's help, Californians may succeed in raising the first completely American domesticated offspring of sturgeon, whose eggs are known as caviar, reports National Wildlife magazine. The delicacy should sell for about \$200 a pound in this country.

Getting Down to Business for \$9 a Month.



Citizens Trust Business Checking.

Average Available Business Checking Balance	Monthly Service Charge
\$5000 or more	\$0
\$1 to \$4999	\$9

How much are you paying for a business checking account at your bank? As much as \$20 some months? Thirty? Fifty?

If you open an account at Citizens Trust, you'll pay no more than \$9 a month. Any month. And you could, with ease, maintain your account for free.

You see, we charge you only if your available balance falls below \$5000.

If you keep an average available monthly balance of between \$1 and \$4999 in your account, you pay just \$9 a month service fee. And a balance of \$5000 or more in your account means you pay no service charges at all.

That's a welcome change from the policies of some area banks who charge you for each deposit you make, every check you write, and a monthly service fee to boot.

Next month, when your monthly statement arrives, sit down and figure out how much your account is costing your business. Then move your money to Citizens Trust. Because getting down to business shouldn't cost more than \$9 a month.



Citizens Trust
The Bank of Trust

DOWNTOWN ANN ARBOR • AUGUSTA TOWNSHIP • BRIGHTON • CHELSEA • LOMB TOWNSHIP
LYNN HILL PARK, ANN ARBOR • SALINE • STATE STREET, ANN ARBOR

MEMBER FDIC

New Nursery Stock Arriving Daily Gee Farms . . . home of all your LAWN & GARDEN NEEDS

**SHADE and
FRUIT TREES
FLOWERING
SHRUBS**

OVER 25 VARIETIES
**FLOWERING DOGWOODS
MAGNOLIAS, RED BUDS,
DOGWOODS**
HUGE SELECTION OF
PERENNIALS

WHOLESALE & RETAIL

FULL LINE
**FRESH VEGETABLES
HOUSEPLANTS
HANGING BASKETS**

**ONION SETS
ONION PLANTS
POTTING SOIL
PEAT MOSS**

**SPRING BULBS
FERTILIZER
Bulk and Package
GARDEN SEEDS**

GEE FARMS

14928 Bunker Hill Rd., Stockbridge

(517) 769-6772

FARM BAKED DOUGHNUTS AND BREAD
HAND-DIPPED ALL-STAR ICE CREAM

Hours: 8 a.m. till dark, 7 days a week



MUSIC AND MORE MUSIC will be part of the Southeastern Conference Art Festival this Saturday at Chelsea High school. Chelsea Bands and Orchestra, as well as The Contemporaries and the Madrigals, will perform a collage concert in the George Prinsing Auditorium beginning at 8 p.m. Some of the featured acts are also

scheduled to participate. A few of the highlights will include a medley of folk tunes, including "Ship To My Love" and "Sweet Mary From Pike," a piano solo by Linda Mullins, a performance by the orchestra of "Pilgrim's Chorus from Tennessee," and a performance by the symphony band of "Frederick.".

Chelsea Players Will Choose Winter's Play

PUBLIC NOTICE OF BUILDINGS SALE WASHTENAW MICH STATE GAME AREA

Notice is hereby given that the contained buildings at 1817 Bank Road, Grass Lake, Michigan will be sold by sealed bids. The site is located 1.1 miles south of Michigan Avenue on the east side of Bank Road.

A total of five buildings will be sold by three separate bids. Buildings include a 32x60 pole barn, 24 by 28 carriage house garage, apple storage barn and cooler 30x70, peaked roof shed 12x15 and a chicken coop 10x12.

To assist prospective bidders, a DNR representative will be present to show the buildings from 9:00 a.m. to 1:00 p.m. on Saturday, May 3, 1986.

One hundred and twenty days (120) will be allowed for the removal and clean up of the building sites from the day of the sales agreement. Site clean-up shall consist of burial and/or removal of all debris associated with respective buildings. The Michigan Department of Natural Resources reserves the right to reject any bids.

To insure compliance with the specified conditions, a performance bond will be deposited with the State at the time the sales agreement is signed. The bond will be refunded after the building is removed and the site cleaned-up.

For a map and further details, please contact:

Ralph Anderson or Jeff Greene
3335 Lansing Avenue
Jackson, Michigan 49202
Telephone (517) 794-3108

The deadline for submitting bids must be in the DNR office, is Monday, May 5th, 9:00 a.m. At that time, all bids received will be opened.

All bids shall be addressed to:

Wildlife Division - Sealed Bid
3335 Lansing Avenue
Jackson, Michigan 49202

At the Chelsea Area Players April board meeting, five plays were presented for consideration for next winter's production. One of these (all of which are murder/mysteries) will be selected at the next board meeting.

The Players also discussed the upcoming summer musical "Camelot." Additional details will be available soon.

Other items discussed were the summer children's workshop, the scholarship for a high school senior, and clean-up of the storage area. Children who are members or whose family are members of the Players will pay a reduced fee for the workshop.

The Players are starting their annual membership drive with a new Family category. For one price, all immediate family members may join the Chelsea Area Players.

The next board meeting will be May 8 after tryouts.

For more information call 475-3629.

CHS Class of '81 Planning Reunion

Reunion plans will be formulated for the Chelsea High school class of '81 when members gather at the Wolverine Lounge Sunday, April 27 at 7 p.m.

Language Fair Coming Soon to CHS

The annual language fair is coming up. It will be held May 1 at the high school. It will be in the cafeteria and the auditorium, from 7 to 9 p.m.

Invitations are being sent through the mail to the parents of all language students. Mrs. Ann Crowley says, "It's the only way all of the invitations are sure to get home."

Mrs. Anne Crowley is one of the four teachers in the language department at the high school. She teaches Spanish along with Mrs. Hazel Anne Hermosillo. Mrs. Cathy Vleck and Mrs. Jane Wilson are the two French teachers.

First level French and Spanish students are doing all sorts of projects for the fair.

Second level students are preparing food for all who are able to come.

Skills are being put together by the third-year students who are in French and Spanish.

Fourth and fifth year students are dressing up as characters from the respective languages. Some characters will be fictional while others are actual historical characters.

All language students have been asked to bring in anything they have dealing with French or Hispanic backgrounds.

Mrs. Ann Crowley and Mrs. Hazel Anne Hermosillo are getting together to bring in a pinata for all the younger brothers and sisters of language students.

Give A Gift Subscription to The Chelsea Standard!



PALMER PUTS YOU IN THE DRIVER'S SEAT FOR \$128⁸⁶*

AFFORDABLE PAYMENT PLAN PRICE INCLUDES DESTINATION CHARGE



1986 ESCORT FRONT WHEEL DRIVE HATCHBACK

Closed end, non-maintenance lease. 48 mo. lease. Total of payments: \$6,185.28. \$150.00 security deposit plus 1st month payment on delivery plus tax, lic. & title fee in advance. Lessee has no obligation to purchase car at lease end but may arrange to purchase car at a negotiated price with the dealer. Total mileage allowed: 60,000 miles. Mileage penalty over 60,000: 66¢ per mile. Lessee is responsible for excess wear and tear.

PALMER FALS

OPEN: MON. AND THURS. 9:30 A.M. - 7:00 P.M., TUE., WED., AND FRI. 9:30 A.M. - 7:00 P.M., SAT. 10 A.M. - 5:00 P.M.
SERVICE OPEN SATURDAYS TOO!
In Washtenaw County since April 19th, 1972
CHELSEA 475-1301

Hoover SPRING CLEAN-UP SALE

HOOVER Convertible Cleaner

- All steel handle
- Powerful 4.8 Amp. motor
- 9 qt. disposable bag

Reg. '\$99⁹⁵

\$79⁹⁵

SAVE '\$20



THE EXCEPTIONAL WARRANTY WITHOUT EXCEPTION.
Full One Year Warranty on All Parts and Labor. Even Covers Bags, Belts, Brushes and Bells.
Five Year Warranty on Cleaner Base.

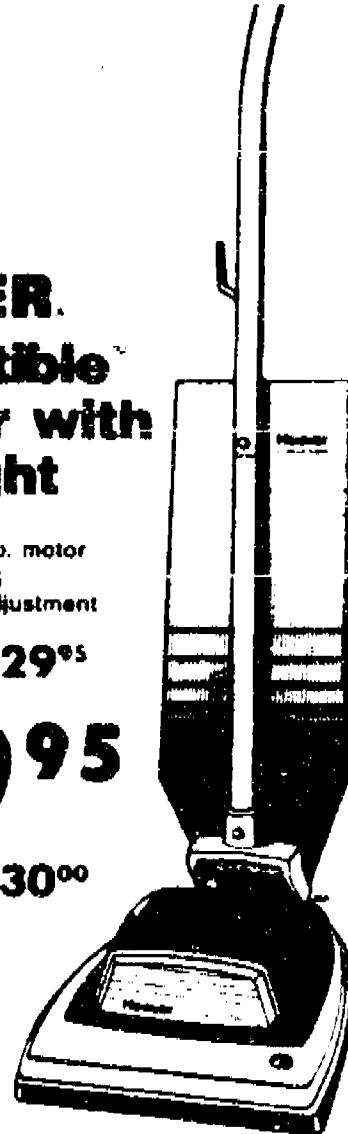
HOOVER Convertible Cleaner with Headlight

- Steel handle
- Powerful 4.8 Amp. motor
- 15 qt. top fill bag
- 4-position rug adjustment

Reg. '\$129⁹⁵

\$99⁹⁵

SAVE '\$30⁰⁰



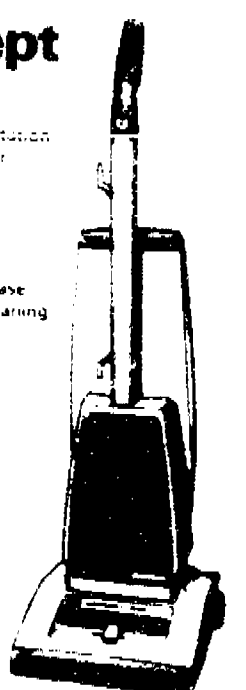
Concept One

- Quadriflex Agitation
- Two Speed Motor
- Cord Wrap
- Quick & Clean Bag Change
- Self Adjusting Nozzle
- Dual Handle Release
- Kevlar Edge Cleaning

Reg. '\$219⁹⁵

\$179⁹⁵*

SAVE '\$40⁰⁰



* Power Drive Model Available for '\$199⁹⁵

Reg. '\$269⁹⁵

\$49⁹⁵

SAVE '\$15⁰⁰

HOOVER Brush-Vac Vacuum



The Agitator is the difference!

- Full Width Cleaning • Great for Stairs & Upholstery • Cars, Vans & Motor Homes
- Above Floor Cleaning

\$199⁹⁵

SAVE '\$70



HOOVER SPIRIT 800 Two-Motor System

3.1 Peak H.P. Motor

- Lightweight & Compact
- Quadriflex Agitator
- Dual Brushed Edge Cleaning
- Soft-Touch Cord Rewind
- Neon "Bag Check" Light
- Top-side Tool Rack

Ask us about no down payment financing!

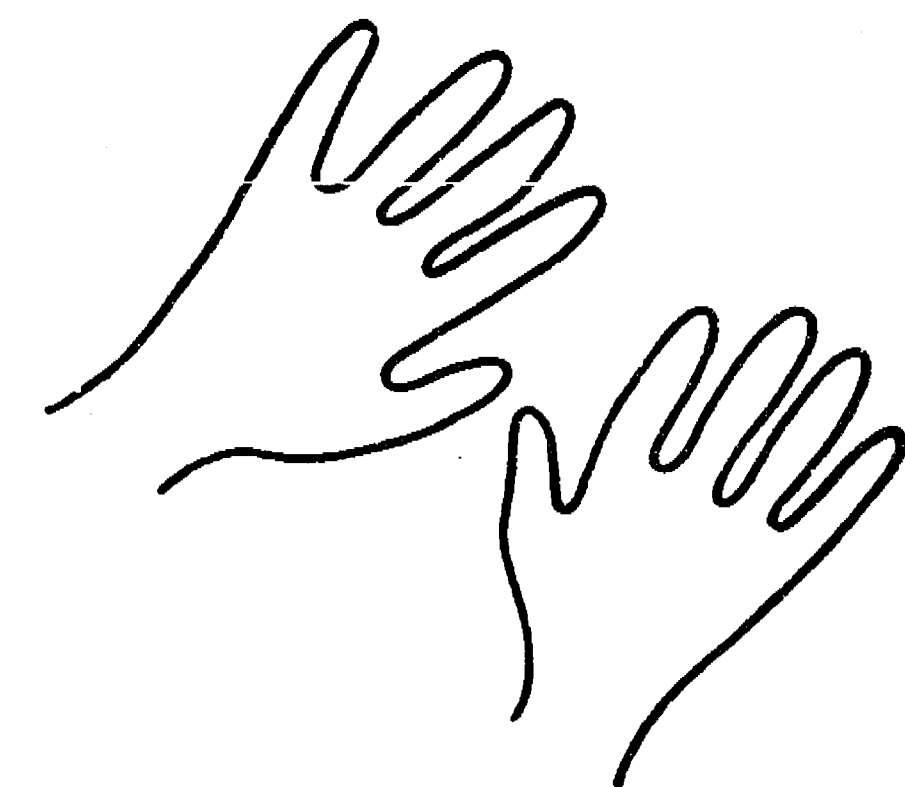
For Sales & Service . . .

HEYDLAUFF'S

Open Mon. Evenings til 7:30 T - Fri. til 5:30. Sat. til 4:00

113 N. Main St., Chelsea

Ph. 475-1221



10 Ways A Woman Can Help Herself In The Battle Against Breast Cancer.

It's a fact of life. One out of every 11 women will develop breast cancer.

Fortunately, when breast cancer is diagnosed and treated early, 9 out of 10 women will be alive and well five years later.

And that's why all women should know that one of the best methods of early detection is as close as your fingertips: breast self-examination.

Regular monthly breast self-exams along with periodic medical checkups and mammograms if you're over 35 — are your first line of defense against breast cancer. So if you don't know how to examine yourself, you

owe it to yourself to learn *the right way*.

The average size lump found by women who are *untanned* in breast self-exams is about 1.5 inches in diameter — the size of a ping pong ball. But with proper training, it is possible for you to feel a tumor *the size of a pea*.

For more information call the Saline Community Hospital Women's Health Service at 429-1555 and ask about our Mammacare™ breast self-examination training program. Because every woman should know how to use one of the most sensitive diagnostic instruments available: her fingers.



Second Annual BREAST CANCER AWARENESS WEEK, April 20-26